



(PIO) POTENTIAL FOR SEVERE WEATHER - 16-18 JUNE 2026

Clinton County EMA - 00060 20260616-18 Possible Severe Wx

Exported by Thomas Breckel
11:56 Jun 18, 2026 | TZ: US/Eastern

STATUS	INCIDENT NAME	INCIDENT TYPE	START DATE	END DATE
Active	20260616-18 Possible Severe Wx	Severe Weather	06/16/2026 07:00	
<p>DESCRIPTION</p> <p>Clinton County EMA is conducting enhanced weather monitoring for a multi-day severe weather threat impacting southwest Ohio. Hazards may include damaging winds, large hail, frequent lightning, heavy rainfall, localized flooding, and isolated tornadoes, with damaging winds currently expected to be the primary threat Wednesday evening through Thursday morning.</p>				
<p>IMPACTS</p> <p>At this time, the most likely impacts to Clinton County are expected to result from damaging thunderstorm winds, heavy rainfall, frequent lightning, and localized flooding. While severe weather is not expected to affect every part of the county, stronger storms that develop could cause scattered power outages, downed trees, roadway obstructions, minor structural damage, and disruptions to outdoor activities. The greatest period of concern remains from late Wednesday afternoon through early Thursday morning. Current forecast information indicates damaging winds are the primary hazard of concern, although large hail and isolated tornadoes remain possible.</p> <p>Public safety agencies should anticipate an increase in weather-related service calls involving downed trees, power lines, flooded roadways, traffic crashes, and weather damage reports. Simultaneous incidents across multiple jurisdictions are possible if stronger storm clusters develop. Response operations may be complicated by nighttime conditions, heavy rainfall, reduced visibility, and debris-blocked roadways. Current forecast guidance suggests the potential for isolated storms ahead of the main line Wednesday evening, followed by a more widespread threat for damaging winds overnight.</p> <p>Critical infrastructure impacts are expected to be limited and localized; however, scattered power outages remain a realistic possibility if damaging winds occur. Temporary interruptions to electrical service could affect traffic signals, communications infrastructure, water and wastewater facilities, businesses, and vulnerable populations dependent on electricity for medical or accessibility needs. Even in locations that avoid significant thunderstorm damage, gusty winds are expected during the day Thursday and may contribute to lingering impacts, particularly where trees, limbs, or utility infrastructure have already been weakened by overnight storms.</p> <p>Lifeline impact considerations remain limited at this time but could develop if stronger storms affect portions of the county. Damage to the Energy Lifeline may result in localized power outages, which could in turn affect Communications systems, traffic signals, and internet connectivity. Transportation impacts may occur where downed trees, utility lines, or flooding obstruct roadways and slow emergency response. Safety and Security agencies may experience increased call volumes and resource demands associated with weather-related incidents. Vulnerable populations, including residents dependent upon electrically powered medical equipment, may experience secondary impacts from prolonged outages. At this time, significant countywide degradation of any FEMA Lifeline is not anticipated; however, localized disruptions to multiple interconnected lifelines remain possible if severe weather impacts occur.</p> <p>Transportation impacts may include localized flooding of low-lying roads, reduced visibility during periods of heavy rainfall, and roadway blockages caused by downed trees or utility lines. Travel conditions could deteriorate rapidly</p>				

during periods of severe weather, particularly during the Wednesday evening and overnight hours.

Community events, outdoor activities, construction projects, agricultural operations, and other weather-sensitive activities face the greatest risk of disruption. Organizations conducting outdoor operations should be prepared for sheltering, temporary suspension of activities, or schedule adjustments if warnings are issued.

Based on current forecast information, widespread catastrophic impacts are not anticipated. However, localized areas may experience significant impacts if severe thunderstorms repeatedly affect the same locations, if damaging wind swaths develop within the overnight storm line, or if isolated tornadoes occur. Clinton County EMA will continue enhanced monitoring and coordinate with local, state, and federal partners as forecast confidence and situational awareness evolve.

UPDATES

Time/Date	Update
06/16/2026 13:50	NWS ILN Weather Brief posted and IMPACTS have been updated.
06/17/2026 03:19	NWS ILN Weather Brief posted and IMPACTS and TIMELINE have been updated.
06/17/2026 13:53	NWS ILN Weather Brief posted.
06/17/2026 21:35	Mesoscale Discussion 1173 posted (80% chance of Tornado Watch being issued)
06/17/2026 22:19	Tornado Watch 347 in effect until 5 am on Thursday, 18 June 2026
06/18/2026 02:01	Tornado Warning in effect until 2:30 am on Thursday, 18 June 2026
06/18/2026 02:17	Tornado Warning cancelled by NWS at 2:17 am on Thursday, 18 June 2026
06/18/2026 06:00	D4H Incident Channel paused. To be archived at 12 noon today.

TIMELINE

The weather threat extends through Thursday, June 18, 2026. The severe weather threat for Tuesday has ended with no significant impacts reported in Clinton County. Attention is now focused on the potential for severe thunderstorms from Wednesday afternoon through early Thursday morning.

The primary weather concern begins Wednesday afternoon as isolated thunderstorms may develop ahead of the main line of storms. If these storms form, they may be capable of producing large hail, damaging winds, and isolated tornadoes. Forecast confidence remains lower regarding the coverage and intensity of these early storms.

The greatest threat period is expected from Wednesday evening through the overnight hours as a widespread line of thunderstorms moves across southwest Ohio. Current forecast guidance indicates damaging straight-line winds will be the primary hazard. Additional threats include frequent lightning, large hail, heavy rainfall, localized flash flooding, isolated tornadoes, downed trees, scattered power outages, and travel disruptions. The arrival of the main line of storms may occur slightly earlier than previously forecast, with impacts possible beginning during the evening hours and continuing into the overnight period.

Localized flash flooding may occur Wednesday evening through Thursday, particularly in areas that receive repeated rounds of rainfall or experience poor drainage. While widespread flooding is not anticipated, storms will be capable of

producing torrential rainfall over short periods of time.

Following the passage of the storms, gusty non-thunderstorm winds are expected to continue through much of Thursday. These winds may contribute to lingering impacts, particularly where trees, limbs, or utility infrastructure have already been weakened by overnight storms. Additional thunderstorms remain possible Thursday morning, with portions of southern Ohio continuing to face a limited severe weather threat.

Residents should maintain a heightened level of weather awareness beginning Wednesday afternoon and continuing through Thursday morning. Multiple methods of receiving watches and warnings are strongly encouraged, especially during the overnight hours when severe weather may occur while many residents are asleep.

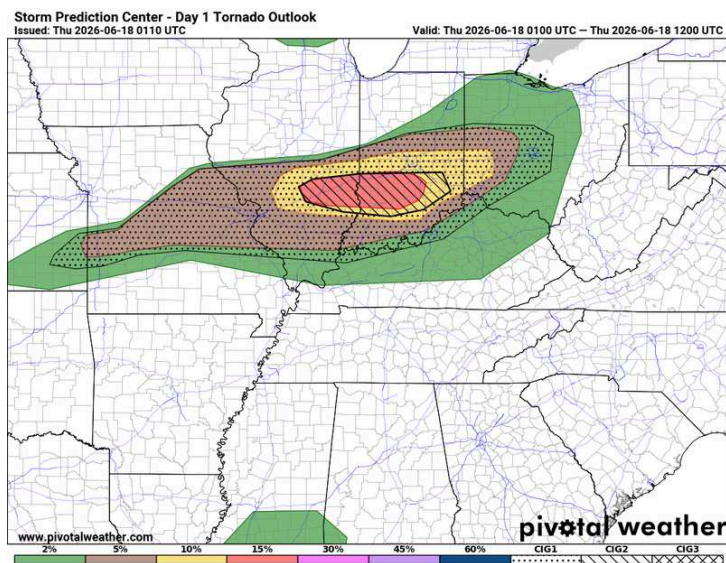
LOCATION (LEFT BLANK IF COUNTYWIDE)

LOCATION

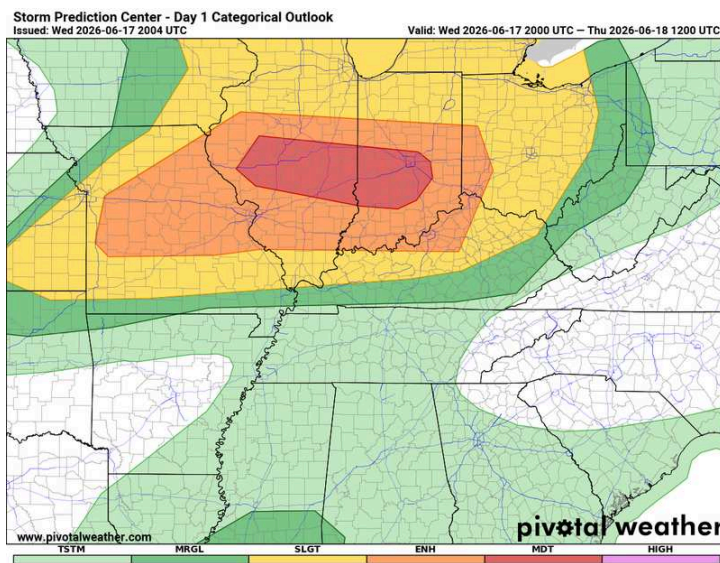
AT RISK/AFFECTED AREA



RISK AREA



Day 1 - ILN_swody1 Tornado.png



Day 1 - ILN_swody1.png

Tornado Watch

Valid Until
5:00 AM EDT Thursday
June 18, 2026

Threat Information

TORNADOES
A few Tornadoes
Likely

HAIL
Isolated Hail Up To
Ping Pong Size Possible

WIND
Scattered Gusts
Up To 75 MPH Likely

Potential Exposure

Population: 5,504,170
Schools: 1621
Hospitals: 114

Tornado Watch #347

Tornado Watch 347.png

WEATHER INFO

DAY 1 WEATHER OUTLOOK	SPC MESOSCALE ANALYSIS (MIDWEST)	CURRENT NWS ILN WEATHER BRIEFING
spc.noaa.gov/partners/timing/cities/images/Wilmington_OH_ILN.png	spc.noaa.gov/exper/mesoanalysis/new/viewsector.php?sector=20	weather.gov/media/iln/ILNBriefing.pdf

PUBLIC PROTECTIVE ACTIONS FOR THOSE DIRECTLY IMPACTED

<p>WHO SHOULD REACT?</p> <p>1. Reference keywords SEVERE, TORNADO, and POWER at cc-ema.org/prepare. 2. Ensure your NOAA radio has fresh batteries installed. 3. If not already signed up, sign up for emergency alerts cc-ema.org/alerts. 4. Stay weather aware! cc-ema.org/monitor</p>
<p>WHAT SHOULD YOU DO?</p> <p>If severe weather is approaching your area, move indoors immediately and be prepared to take shelter if a warning is issued. Monitor trusted weather sources, keep your mobile phone charged, avoid unnecessary travel during storms, and be ready to move to a basement or small interior room on the lowest floor away from windows if threatening weather develops. Never drive through flooded roadways, and stay clear of downed power lines or storm-damaged areas until they have been declared safe.</p>
<p>WHERE SHOULD YOU GO?</p> <p>If severe weather threatens your location, go to a sturdy building and move to the safest available shelter area. The best location is a basement. If a basement is not available, go to a small interior room, hallway, bathroom, or closet on the lowest floor, away from windows and exterior walls. If you are in a mobile home, vehicle, or temporary structure, relocate to a substantial building before the storm arrives. Outdoor shelters, tents, pavilions, and vehicles do not provide adequate protection from severe thunderstorms or tornadoes.</p>

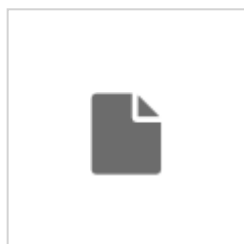
<p>WHERE SHOULD YOU AVOID?</p> <p>Avoid windows, glass doors, sunrooms, garages, large open rooms, and areas beneath heavy objects that could fall or collapse during high winds. Stay away from mobile homes, tents, pavilions, outdoor event areas, and vehicles once</p>
--

severe weather is approaching. Do not seek shelter under overpasses or bridges, and avoid flooded roadways, low-water crossings, and areas with downed trees or power lines. If a warning has been issued, remain in your shelter location until the threat has passed and local officials indicate it is safe to resume normal activities.

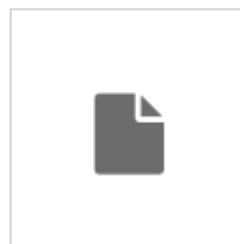
WHEN SHOULD YOU ACT?

Act before severe weather reaches your location. Review your shelter options, monitor weather forecasts, and ensure you have multiple ways to receive warnings. When a Severe Thunderstorm Warning or Tornado Warning is issued for your area, or when threatening weather is observed approaching, move to your shelter location immediately and do not wait until heavy rain, strong winds, or hail begin. Taking protective action early provides the greatest opportunity to keep yourself and your family safe.

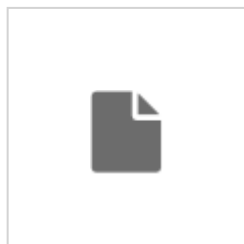
ATTACHMENTS



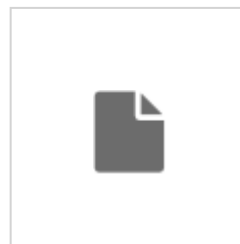
[Attachment 3 - Emergency supplies list.pdf](#)



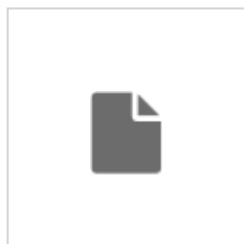
[ready_pet-preparedness-flyer.pdf](#)



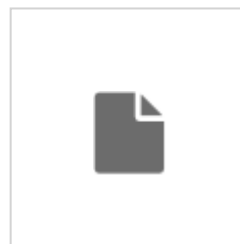
[power-outage_information-sheet.pdf](#)



[tornado-information-sheet.pdf](#)



[thunderstorm-information-sheet.pdf](#)



[are-you-ready-guide.pdf](#)

ADDITIONAL INFORMATION

ADDITIONAL INFORMATION

Residents should stay informed by monitoring trusted weather sources for updated forecasts, watches, warnings, and local impact information. It is helpful to know where your nearest safe shelter location is, have multiple ways to receive emergency alerts, and understand the difference between a watch and a warning. Residents should also be aware of local road conditions, power outage information, school or event schedule changes, and any emergency instructions issued by local officials. Checking on family members, neighbors, and those with access or functional needs before severe weather arrives can also help improve community safety and resilience.




DAMAGE REPORTING**LEARN HOW & WHAT TYPE OF DAMAGE TO REPORT**

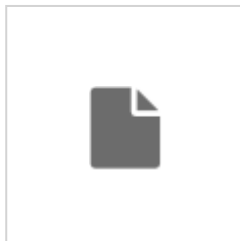
cc-ema.org/post/damage-assessment

LINK TO ORION DAMAGE ASSESSMENT

report-oh-clinton.orioncentral.com



LOG

TIME	MESSAGE	PERSONNEL
Jun 13, 2026		
08:41	Clinton County EMA issued an initial Weather Heads-Up social media post regarding a potential severe weather signal during the middle of the upcoming week. The purpose of the message was to provide early public awareness, encourage residents to monitor future forecast updates, and begin preparedness actions as forecast confidence developed.	Thomas Breckel
Jun 14, 2026		
09:33	National Weather Service ILN issues updated weather briefing.  <u>20260614 0933 ILNBriefing.pdf</u>	Thomas Breckel
12:52	National Weather Service ILN issues updated weather briefing.  <u>20260614 1252 ILNBriefing.pdf</u>	Thomas Breckel
Jun 15, 2026		
04:56	National Weather Service ILN issues updated weather briefing.  <u>20260615 0456 ILNBriefing.pdf</u>	Thomas Breckel
06:42	Clinton County EMA published the initial Weather Outlook for the 16–18 June period. The outlook highlighted the potential for strong to severe thunderstorms, heavy rainfall, and localized flooding later in the week. This served as the first formal weather product for the event and established the foundation for subsequent public and partner communications. Link: https://www.cc-ema.org/post/hum-20260616-18	Thomas Breckel
09:44	Clinton County EMA distributed the weather outlook to local partners, stakeholders, and weather-sensitive organizations. Recipients were advised that Wednesday had emerged as a potential severe weather day and were encouraged to review contingency plans, identify sheltering options, and monitor forecast updates as additional information became available.	Thomas Breckel
15:38	National Weather Service ILN issues updated weather briefing.	Thomas Breckel



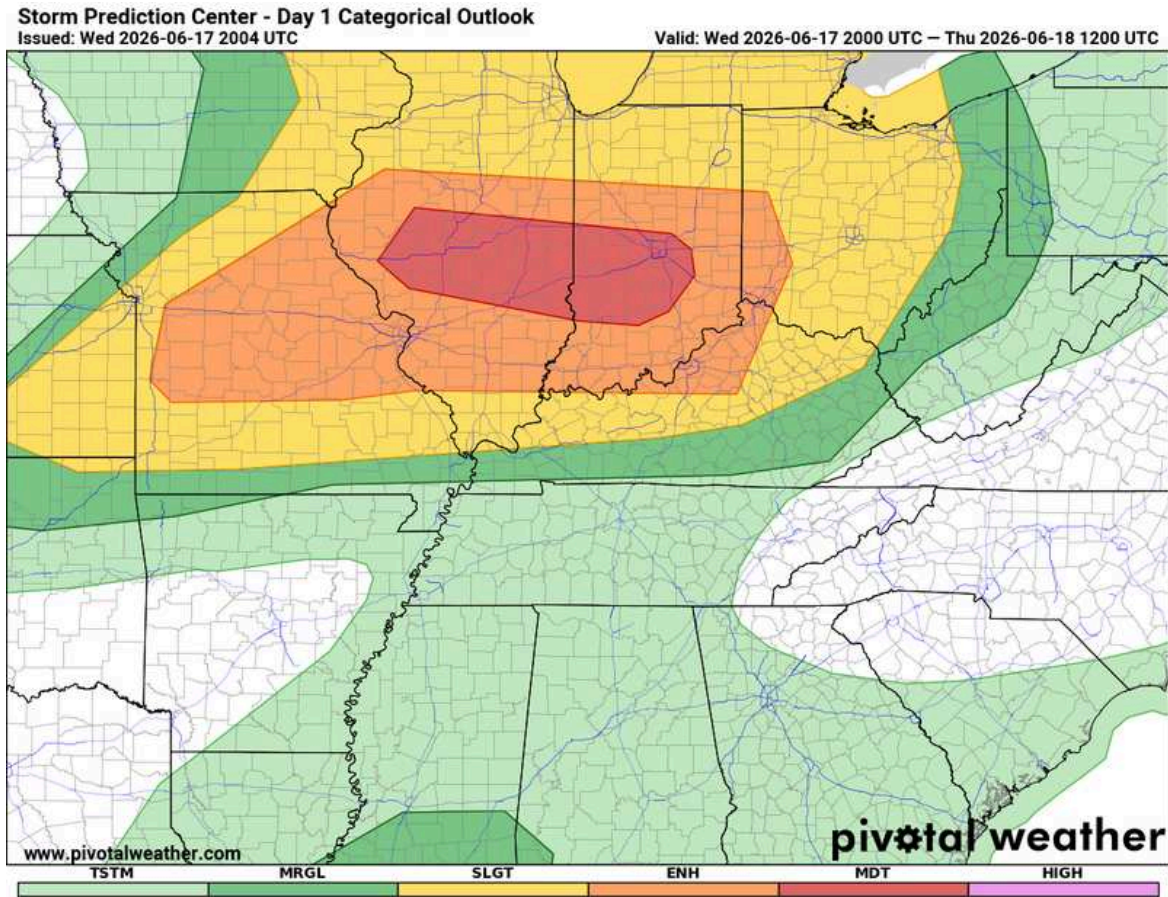
[20260615 1538 ILNBriefing.pdf](#)

16:11	Clinton County EMA distributed a CCEA Alert highlighting the potential for strong storms on Tuesday and severe storms, heavy rainfall, and flooding on Wednesday and Thursday. The alert directed recipients to the EMA weather outlook for additional details and preparedness information.	Thomas Breckel
Jun 16, 2026		
02:11	<p>The National Weather Service Wilmington office issued an updated Decision Support Briefing indicating no significant changes to the forecast. The briefing continued to identify Wednesday evening through Thursday morning as the primary period of concern for severe weather, heavy rainfall, and gusty winds.</p> <div data-bbox="625 667 863 907" data-label="Image"> </div> <p><u>20260616 0218 ILNBriefing.pdf</u></p>	Thomas Breckel
02:18	<p>National Weather Service ILN issues updated weather briefing.</p> <div data-bbox="625 993 863 1232" data-label="Image"> </div> <p><u>20260616 0218 ILNBriefing.pdf</u></p>	Thomas Breckel
07:00	Clinton County EMA published Weather Outlook Update No. 1. The update refined the primary threat window to Wednesday evening through Thursday morning and continued to highlight severe thunderstorms, heavy rainfall, localized flooding, and gusty winds as the primary hazards of concern. Link: https://www.cc-ema.org/post/hum-20260616-18	Thomas Breckel
09:00	Clinton County EMA distributed a CCEA Alert notifying recipients that Weather Outlook Update No. 1 had been published. The alert emphasized that the greatest concern remained Wednesday evening through Thursday and directed the public to the updated weather information. Link: https://www.cc-ema.org/post/hum-20260616-18	Thomas Breckel
10:01	The Clinton County EMA Emergency Notice page was updated to reflect the ongoing severe weather monitoring effort for the 16–18 June period. Information posted included the current weather outlook, identified hazards, anticipated timing, preparedness information, and links to supporting forecast products and updates. The page serves as a public-facing source of information for residents, businesses, partner agencies, and other stakeholders seeking current event information. https://www.cc-ema.org/notice	Thomas Breckel
14:02	NWS Wilmington issued an updated Decision Support Briefing. No major changes were made to the overall forecast; however, the expected arrival time of the primary line of severe thunderstorms Wednesday evening and night was adjusted slightly earlier. NWS continues to indicate severe thunderstorms are likely Wednesday evening into Thursday, with damaging winds remaining the primary hazard. Large hail, isolated tornadoes, flash flooding, and gusty post-frontal winds remain possible. Additional forecast refinement	Thomas Breckel

	<p>identified a conditional tornado threat from discrete storms developing late Wednesday afternoon and evening ahead of the main line of storms.</p> <div style="text-align: center;">  </div> <p style="text-align: center;"><u>202606161350 ILNBriefing.pdf</u></p>	
14:35	<p>Clinton County EMA published a social media update directing residents, businesses, partner agencies, and stakeholders to Weather Outlook Update No. 2 on the EMA website. The post summarized key forecast changes, including increased confidence in severe thunderstorms Wednesday evening through Thursday morning, greater emphasis on widespread damaging winds, and the potential for isolated storms ahead of the primary line of thunderstorms. The post encouraged the public to review severe weather safety plans, identify shelter locations, maintain multiple methods of receiving warnings, and monitor future forecast updates. The full update was made available at https://www.cc-ema.org/post/hum-20260616-18.</p>	Thomas Breckel
14:40	<p>Clinton County EMA distributed a countywide CCEA Alert announcing the publication of Weather Outlook Update No. 2 for the 16–18 June severe weather monitoring period. The alert advised recipients that forecast confidence had increased regarding severe thunderstorms Wednesday evening through Thursday morning, identified damaging winds as the primary threat, and directed residents to the full weather outlook for additional information, preparedness guidance, and forecast details.</p>	Thomas Breckel
Jun 17, 2026		
03:19	<p>The National Weather Service Wilmington Weather Forecast Office issued an updated Decision Support Briefing for southwest Ohio. The briefing maintained the overall forecast message of severe thunderstorms expected Wednesday evening into the overnight hours, with damaging winds identified as the primary hazard. Additional threats include large hail, isolated tornadoes, frequent lightning, heavy rainfall, localized flash flooding, and gusty non-thunderstorm winds both ahead of the storm line and again on Thursday. The briefing continued to indicate a slightly faster arrival of the primary line of storms than previously forecast and highlighted uncertainty regarding how quickly discrete storms may organize into a line, which could affect overall storm severity. For Clinton County, the anticipated arrival window for the primary line of storms remains approximately 11:00 PM Wednesday through 2:00 AM Thursday, although isolated storms may develop earlier Wednesday afternoon and evening. EMA reviewed the updated forecast package, maintained enhanced monitoring operations, and will continue to monitor forecast updates and coordinate with partner agencies as conditions evolve.</p> <div style="text-align: center;">  </div> <p style="text-align: center;"><u>20260617 0319 ILNBriefing.pdf</u></p>	Thomas Breckel
06:33	<p>Clinton County EMA published Weather Outlook Update No. 3 to social media (https://www.facebook.com/share/p/1Cce82dd4J/) and directed residents, businesses, elected officials, and community stakeholders to the full weather briefing on the EMA website. The post highlighted increasing confidence in severe thunderstorms affecting southwest Ohio Wednesday evening through early Thursday morning, identified damaging winds as the primary hazard, and noted the potential for large hail, isolated tornadoes, heavy rainfall, localized flooding, and scattered power outages. The update emphasized the expected timeline of impacts, recommended heightened weather awareness beginning Wednesday afternoon, and encouraged the public to review preparedness plans, identify shelter locations, and maintain multiple methods of receiving weather warnings. The full update was made available at https://www.cc-ema.org/post/hum-20260616-18.</p>	Thomas Breckel
06:51	<p>A countywide CCEA Alert was scheduled for distribution at 0900 hours directing residents and subscribers to</p>	Thomas Breckel

	<p>Weather Outlook Update No. 3 on the Clinton County EMA website. The message advised that severe thunderstorms remained likely Wednesday evening through Thursday morning, identified damaging winds as the primary hazard, and encouraged recipients to review the latest forecast information, timing, hazards, and preparedness recommendations. The alert served as a continuation of ongoing public information efforts and directed recipients to the latest weather outlook at https://www.cc-ema.org/post/hum-20260616-18 for additional details and updates as forecast confidence and weather conditions evolved.</p>	
07:10	<p>The Public Information Officer (PIO) Form associated with the Clinton County EMA Emergency Notice Page was updated to reflect the latest forecast information, threat assessment, timeline, impact analysis, public protective actions, and situational awareness information for the 16–18 June 2026 severe weather monitoring period. Updates incorporated the latest National Weather Service Wilmington Decision Support Briefing, including increased confidence in severe thunderstorms Wednesday evening into the overnight hours, damaging winds as the primary hazard, the potential for isolated tornadoes and large hail, localized flash flooding concerns, and gusty non-thunderstorm winds expected through Thursday. The updated information was published to the public-facing Emergency Notice Page to ensure residents, elected officials, partner agencies, and stakeholders had access to current preparedness and situational awareness information. Monitoring and periodic updates will continue as forecast conditions evolve.</p>	Thomas Breckel
13:53	<p>The Clinton County Emergency Management Agency reviewed the updated National Weather Service Wilmington Decision Support Briefing issued at 1:22 PM EDT on June 17, 2026. The briefing continues to indicate a significant severe weather threat for southwest Ohio this evening and overnight, with damaging straight-line winds remaining the primary hazard. Updates included the addition of a potential initial round of showers and isolated thunderstorms between 3:00 PM and 6:00 PM, some of which could become strong to severe, while the primary severe weather threat remains associated with a widespread line of thunderstorms expected between approximately 8:00 PM and 5:00 AM. Forecast timing has been adjusted slightly earlier than previous briefings, and city-specific timing graphics were added. Clinton County remains within a Slight Risk (Level 2 of 5) area, with the greatest threat window for Wilmington extending from approximately 8:00 PM through 2:00 AM. Hazards being monitored include damaging winds, isolated tornadoes, large hail, frequent lightning, heavy rainfall, and localized flash flooding. A Flood Watch has been issued for portions of the region, and the NWS notes isolated flooding remains possible, particularly where storms train over the same locations. In addition, gusty non-thunderstorm winds are expected ahead of the storm line and again during the day Thursday. Clinton County EMA will continue monitoring forecast updates, maintaining situational awareness, and providing information to public safety partners and the public as conditions warrant.</p> <div data-bbox="630 1207 867 1444" style="text-align: center;"></div> <p style="text-align: center;"><u>20260617 1325 ILNBriefing.pdf</u></p>	Thomas Breckel
14:24	<p>CCEA distributed the updated National Weather Service Wilmington Decision Support Briefing to subscribers of the Prepare Now messaging list to provide the latest severe weather information for June 17, 2026. The briefing highlighted the potential for severe thunderstorms, damaging winds, isolated tornadoes, large hail, flash flooding, and gusty non-thunderstorm winds affecting southwest Ohio during the evening and overnight hours. Distribution of the briefing supports public preparedness, situational awareness, and timely access to authoritative weather information. The update was distributed to 5,968 SMS subscribers and 752 email subscribers. Subscribers were provided the briefing link and encouraged to monitor forecast updates as weather conditions evolve.</p>	Thomas Breckel
18:40	<p>A subtle shift southeast in the Enhanced (Level 3) Severe Threat for overnight tonight and some updated messaging regarding forecast challenges. Remember, have multiple ways to receive all weather alerts and</p>	Thomas Breckel

have a plan in place for your home if severe weather or flooding occurs overnight!



Day 1 - ILN_swody1.png

21:27 Clinton County EMA continued monitoring severe weather developments during the evening hours through coordination with the National Weather Service Wilmington Forecast Office. An updated NWSChat briefing highlighted an area of greatest concern expected to impact portions of southwest Ohio between approximately 2200 and 0000 hours, with severe thunderstorms anticipated to move into western counties around 10:00 PM and approach the Interstate 75 corridor near midnight. Forecasters indicated the primary threats remain damaging straight-line winds and isolated tornadoes, with the potential for a stronger tornado not entirely ruled out, particularly in areas near the Ohio-Indiana-Kentucky Tri-State region where less rainfall has occurred. Despite a gradual reduction in atmospheric instability after sunset, strong wind shear remains in place and is expected to support the downward transfer of severe winds to the surface. Clinton County EMA reviewed the accompanying forecast graphic and noted that warning polygons displayed on the image reflected conditions around 9:00 PM and were not intended for operational decision-making. Current watches, warnings, and advisories continue to be monitored through National Weather Service products and

Thomas Breckel

established situational awareness platforms. Monitoring operations remain ongoing with continued assessment of potential impacts to county operations, critical infrastructure, and community lifelines.



[ILN Weather Story 2124.mp4](#)

Short Term Update June 17, 2026 8:52 PM
Storms in central Indiana continue to move east

- **Greatest concern for severe weather in the next several hours is within the circled area.**
 - Storms move into the circled area between 10 PM and 12 AM.
 - Storms will continue eastward overnight.
- **Main hazards continue to be:**
 - Damaging winds
 - Isolated tornadoes
 - Flooding/ flash flooding
 - Large hail

Have multiple ways to receive warning information during the overnight hours!

NATIONAL OCEANIC AND ATMOSPHERIC ADMINISTRATION
NATIONAL WEATHER SERVICE - WILMINGTON, OH

weather.gov/iln @NWSILN /NWSWilmingtonOH National Weather Service
Wilmington, OH

[ILNWeatherStory 20260617 2121.png](#)

Current Watches, Warnings, and Advisories

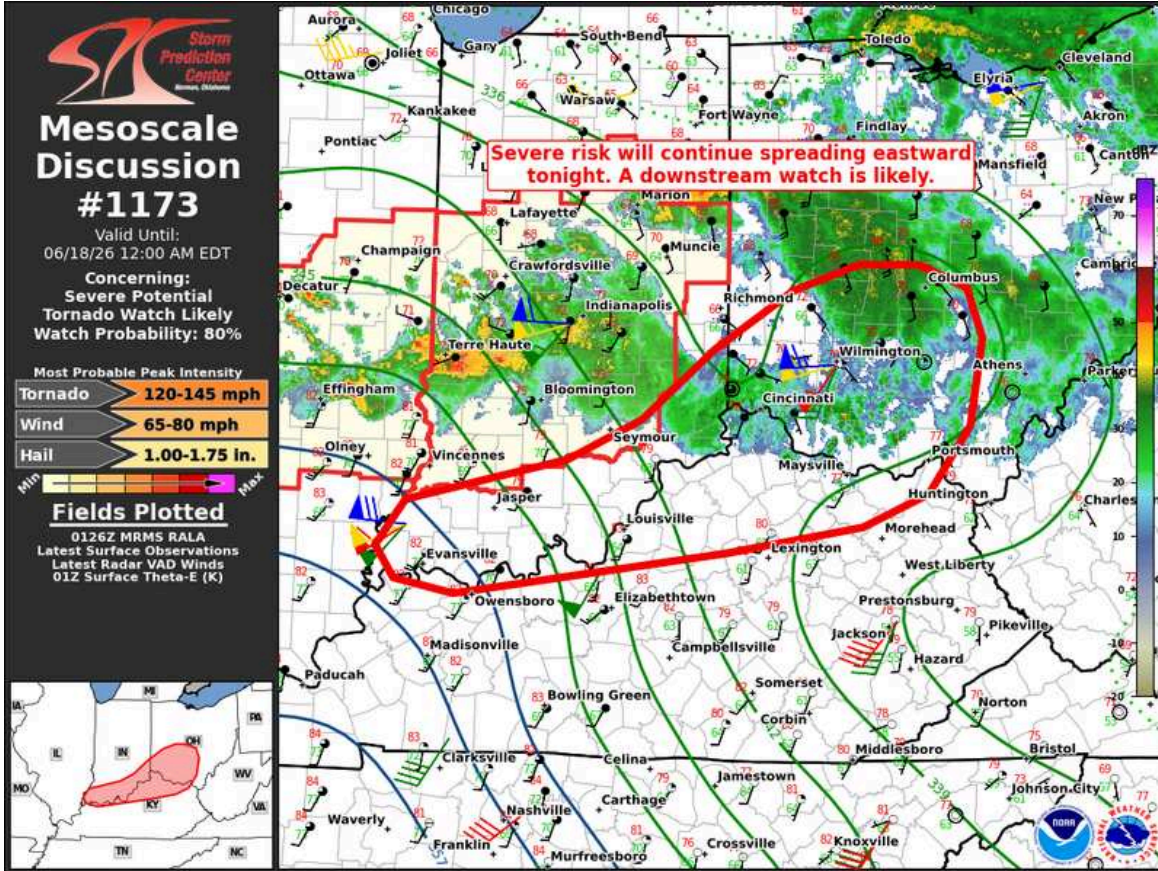
Generated: 2026-06-17 21:05 EDT

[ILNWeatherStory 20260617 2123.png](#)

21:35 Clinton County EMA monitored Storm Prediction Center Mesoscale Discussion (MD) 1173 as severe weather continued to organize across portions of the Ohio Valley during the evening hours of June 17, 2026. The

Thomas Breckel

discussion highlighted an environment characterized by strong wind shear capable of supporting damaging winds and tornado development as storms progressed eastward toward southwest Ohio. While the primary area discussed was located west of Clinton County, the meteorological conditions described within the discussion were expected to translate eastward through the overnight period and remained relevant to county situational awareness activities. Forecast concerns included damaging straight-line winds, large hail, and tornado potential, with forecasters noting that strong low-level wind fields could compensate for decreasing instability after sunset. Clinton County EMA reviewed the discussion, assessed potential impacts to community lifelines and critical infrastructure, and incorporated the information into ongoing weather monitoring and partner coordination efforts. The discussion reinforced previously identified concerns regarding overnight severe weather potential and supported continued heightened situational awareness across Clinton County and surrounding jurisdictions.



mcd1173_full.png



Screenshot 2026-06-17 213720.png

22:28 Clinton County EMA received notification that the National Weather Service issued a Tornado Watch for Clinton County and surrounding portions of southwest Ohio valid until 5:00 AM EDT on June 18, 2026. The watch was issued due to atmospheric conditions favorable for the development of severe thunderstorms capable of producing damaging winds, large hail, and tornadoes. Forecast discussions from the National Weather Service Wilmington Forecast Office and Storm Prediction Center indicated that strong wind shear and sufficient instability remained in place across the region, supporting the potential for organized severe weather during the overnight period. Upon issuance of the watch, Clinton County EMA continued enhanced situational awareness activities, reviewed forecast products and radar trends, and disseminated public information encouraging residents to remain weather aware, identify shelter locations, ensure multiple methods of receiving warnings were available, and prepare for possible overnight severe weather impacts. Monitoring operations remained ongoing with continued assessment of potential impacts to county

Thomas Breckel

operations, critical infrastructure, utilities, transportation networks, communications systems, and other Community Lifelines.

Tornado Watch

Valid Until
5:00 AM EDT Thursday
June 18, 2026

Threat Information

TORNADOES
A few Tornadoes
Likely

HAIL
Isolated Hail Up To
Ping Pong Size Possible

WIND
Scattered Gusts
Up To 75 MPH Likely

Potential Exposure

Population: 5,504,170
Schools: 1621
Hospitals: 114

Tornado Watch #347

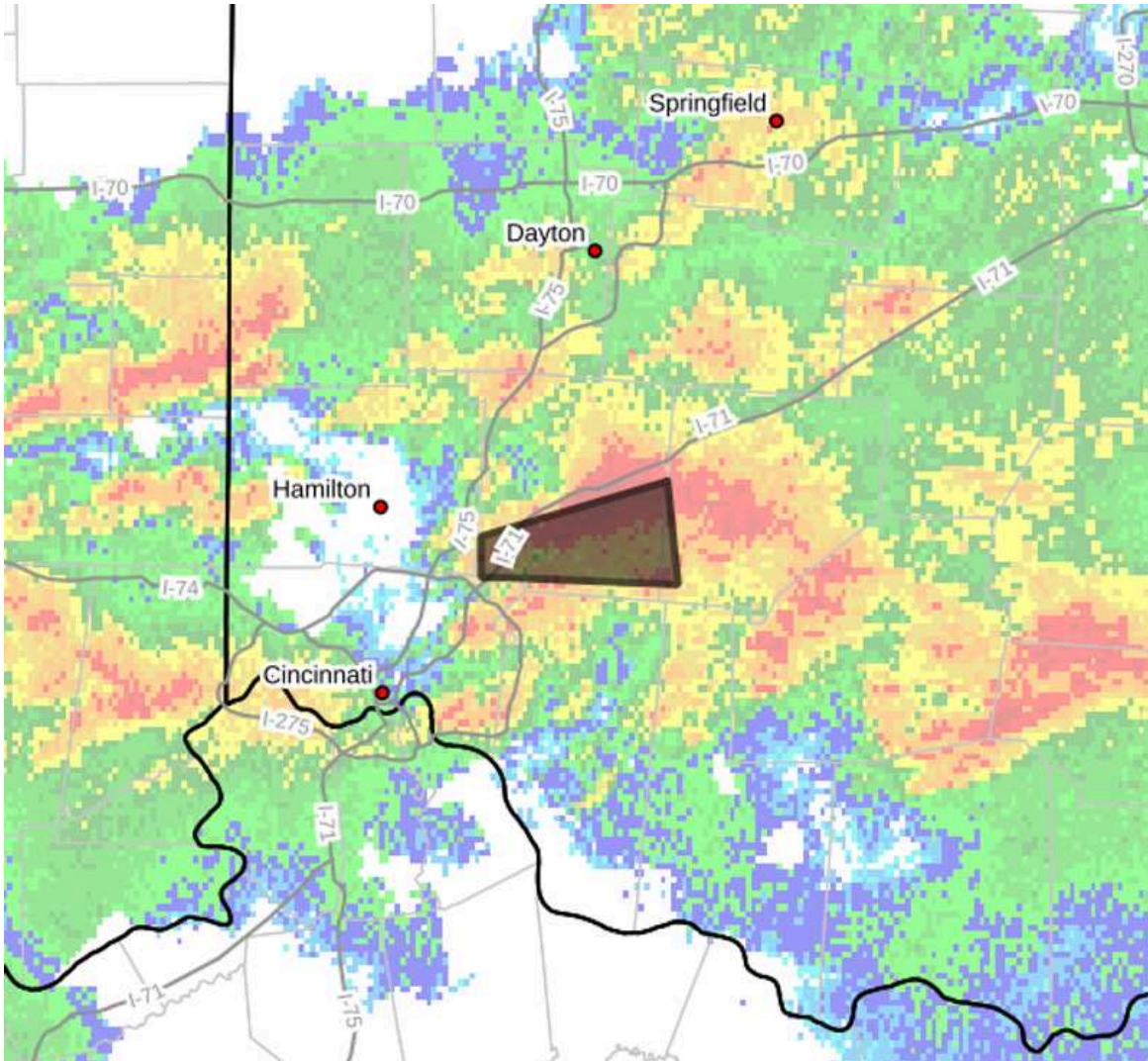
Tornado Watch 347.png

Jun 18, 2026

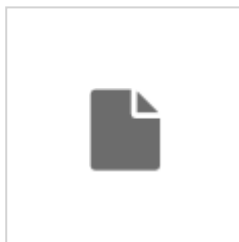
02:01 At 2:01 AM EDT on Thursday, June 18, 2026, the National Weather Service Wilmington issued a Tornado Warning for southern Warren County and west-central Clinton County, including the Blanchester area, until 2:30 AM EDT. The warning was based on radar-indicated rotation from a severe thunderstorm capable of producing a tornado near Kings Island, moving east at 40 mph. Locations listed included Blanchester,

Thomas Breckel

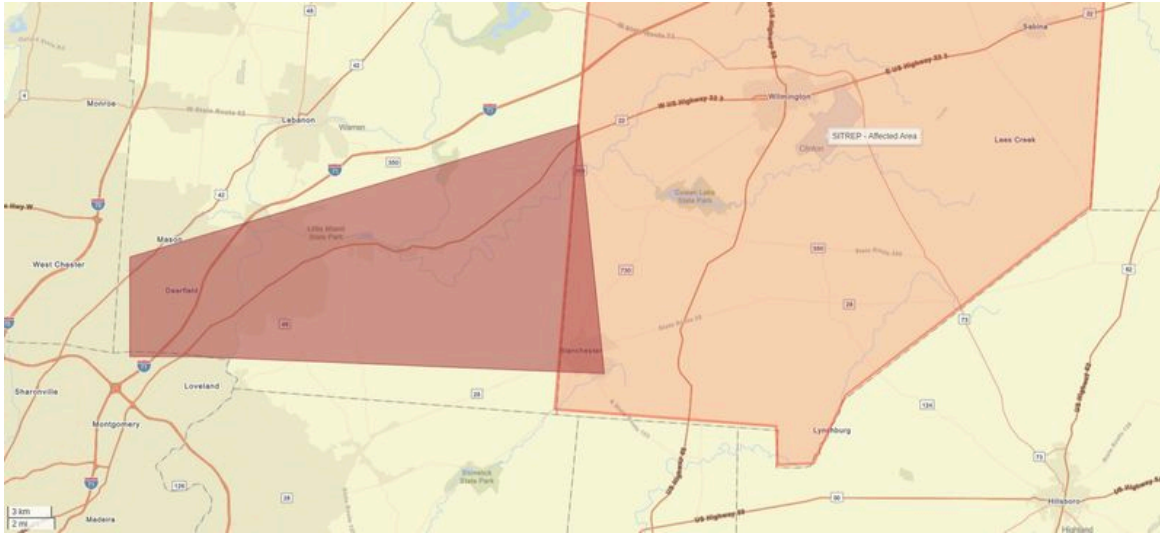
Clarksville, State Route 350 at US 22, and nearby areas. Clinton County EMA continued monitoring radar and NWS Chat for storm progression and potential impacts.



[Tornado Warning_20260618_0213.png](#)



[Tornado Warning_\(Audio\)_WIOH_LP-20260618-020202620a0.mp3](#)



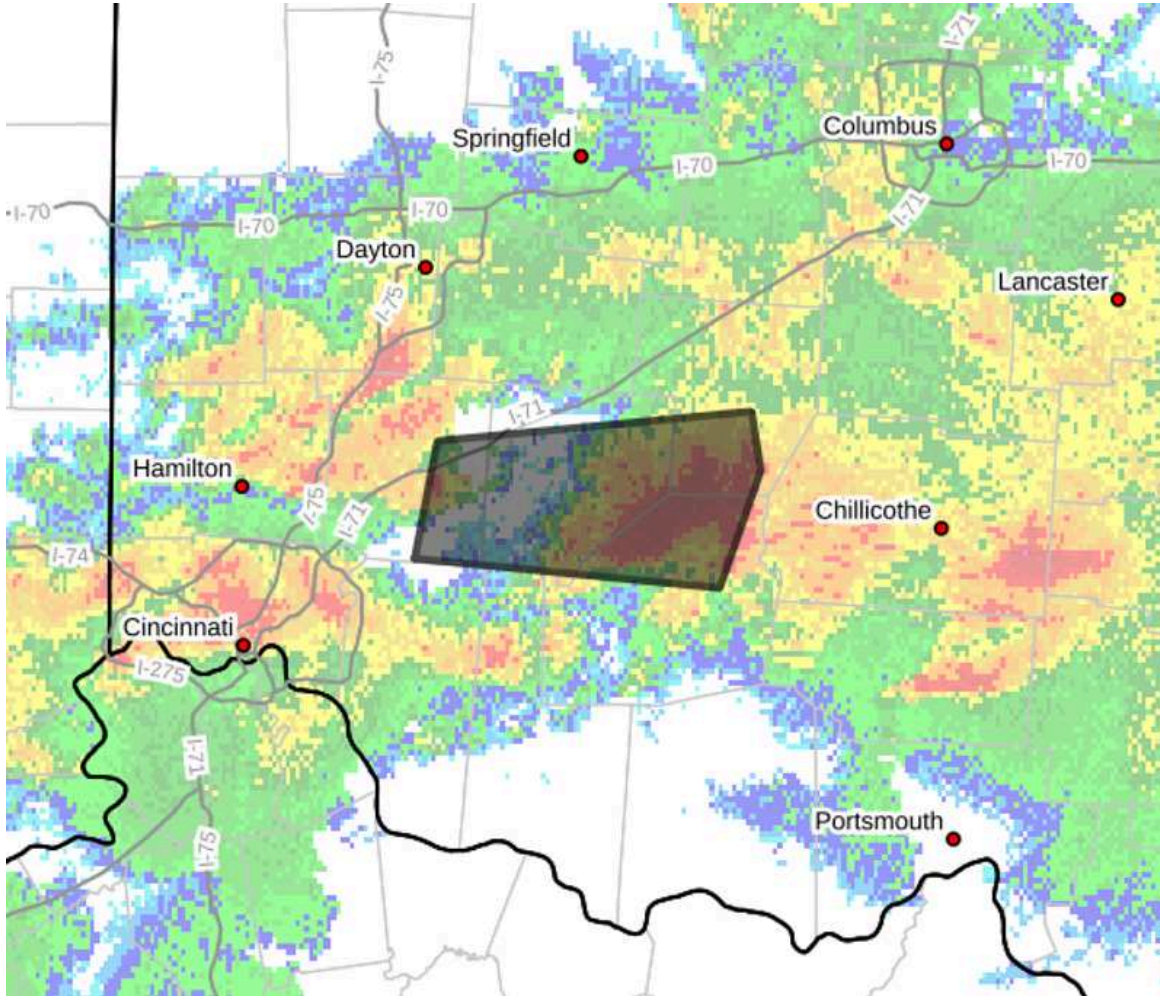
TorWar Polygon - 00060-20260616-18-possible-severe-wx.jpg

02:02	<p>Following issuance of a National Weather Service Tornado Warning affecting a limited portion of Clinton County, an automated notification was distributed through the Clinton County Emergency Alerts (CCEA) system to subscribers enrolled in the 24/7 Tornado Warning (TorWarn) notification list. The message advised recipients that a Tornado Warning had been issued and directed them to National Weather Service resources for additional information. Because the TorWarn list is a category-based subscription rather than an address-specific alerting method, all subscribers to that list received the notification regardless of whether their residence or location was within the warning polygon. In contrast, CCEA users who have registered a geo-tagged address receive warning notifications only when their registered location falls within the affected National Weather Service warning area. This notification served to provide rapid warning dissemination while reinforcing the distinction between countywide subscription-based alerts and geographically targeted warning notifications.</p>	Thomas Breckel
02:03	<p>A coordination call was conducted with the National Weather Service Wilmington (ILN) Operations Desk to verify and deconflict information related to the Tornado Warning issued for portions of Clinton County at approximately 2:01 AM on June 18, 2026. Discussion focused on warning basis, storm location, warning polygon placement, projected storm track, and the distinction between radar-indicated and observed tornado information. NWS personnel confirmed details regarding the warning issuance process, storm evolution, and supporting radar signatures used in warning decision-making. Additional clarification was obtained regarding the geographic areas impacted by the warning, expected movement of the circulation, and subsequent warning updates and cancellation. Information obtained during the coordination call was used to validate situational awareness, support local public information efforts, address public inquiries regarding warning notifications and outdoor warning siren activation, and ensure consistency between county messaging and National Weather Service products.</p>	Thomas Breckel
02:12	<p>During overnight severe weather monitoring operations, Clinton County EMA identified a radar-indicated circulation signal east of Maineville in Warren County moving east toward the Clinton/Warren County border. Based on the available radar information and the potential for the feature to affect western portions of Clinton County, the Clinton County Emergency Alerts (CCEA) system was utilized to distribute a situational awareness message to subscribers. The alert advised residents to closely monitor weather conditions and be prepared to take shelter if necessary. The notification was issued as a precautionary measure to increase public awareness of a developing weather threat, encourage readiness actions, and support timely protective decision-making should warning conditions develop or intensify.</p>	Thomas Breckel
02:17	<p>At 2:17 AM EDT on June 18, 2026, the National Weather Service cancelled the Tornado Warning that had been in effect for portions of eastern Warren County and western Clinton County. The storm that previously exhibited radar-indicated rotation weakened below tornado warning criteria as it moved eastward. Following the cancellation, the National Weather Service issued a Special Weather Statement at 2:18 AM EDT for portions of Clinton, Highland, Fayette, and Warren Counties. The statement identified a strong thunderstorm near Blanchester moving east at approximately 45 mph capable of producing wind gusts up to 45 mph, very heavy rainfall, reduced visibility, and localized hydroplaning hazards. Impacted locations included Wilmington, Blanchester, Sabina, Lynchburg, New Vienna, Clarksville, and surrounding communities. Clinton County EMA</p>	Thomas Breckel

continued monitoring weather conditions, radar trends, and National Weather Service updates. A Tornado Watch remained in effect for Clinton County until 5:00 AM EDT.

02:19 At approximately 2:19 AM EDT on June 18, 2026, the National Weather Service issued an updated Special Weather Statement for portions of Clinton, Highland, Fayette, and surrounding counties as a strong thunderstorm continued moving east across the area. Radar indicated the storm was producing wind gusts up to 45 mph, torrential rainfall, and frequent cloud-to-ground lightning. The strongest portion of the storm was located near Wilmington and Blanchester, impacting portions of Interstate 71 and surrounding communities. Following the cancellation of the earlier Tornado Warning, the primary threats transitioned to gusty winds, heavy rainfall, reduced visibility, lightning, and localized hydroplaning hazards. Clinton County EMA continued monitoring radar trends, warning products, and National Weather Service updates while maintaining situational awareness as the storm progressed eastward through the county. A Tornado Watch remained in effect for Clinton County until 5:00 AM EDT. <https://inws.ncep.noaa.gov/a/a.php?i=129314526>

Thomas Breckel



Special Weather Statement 20260618 0219.png

02:25 Upon notification from the National Weather Service that the Tornado Warning issued at 2:01 AM for eastern Warren County and far western Clinton County had been canceled, Clinton County EMA utilized the Clinton County Emergency Alerts (CCEA) system to distribute an update to subscribers. The message informed recipients that the Tornado Warning had been dropped while emphasizing that strong and gusty winds remained present across the area. The notification was issued to provide timely warning status updates, reduce public confusion regarding ongoing weather threats, and encourage continued caution as severe weather conditions and associated impacts persisted following the expiration of the tornado threat.

Thomas Breckel

03:27 Clinton County EMA requested that CCSO Dispatch distribute an EMA Text Alert regarding multiple high-water locations within the county. The alert advised motorists to avoid areas affected by high water at US 22 near Ellis Run Road, State Route 73 near Antioch Road, and Airborne Road near the Amazon facility. The message informed recipients that ODOT signage placement was pending at the affected locations and advised motorists to avoid flooded roadways until conditions improved.

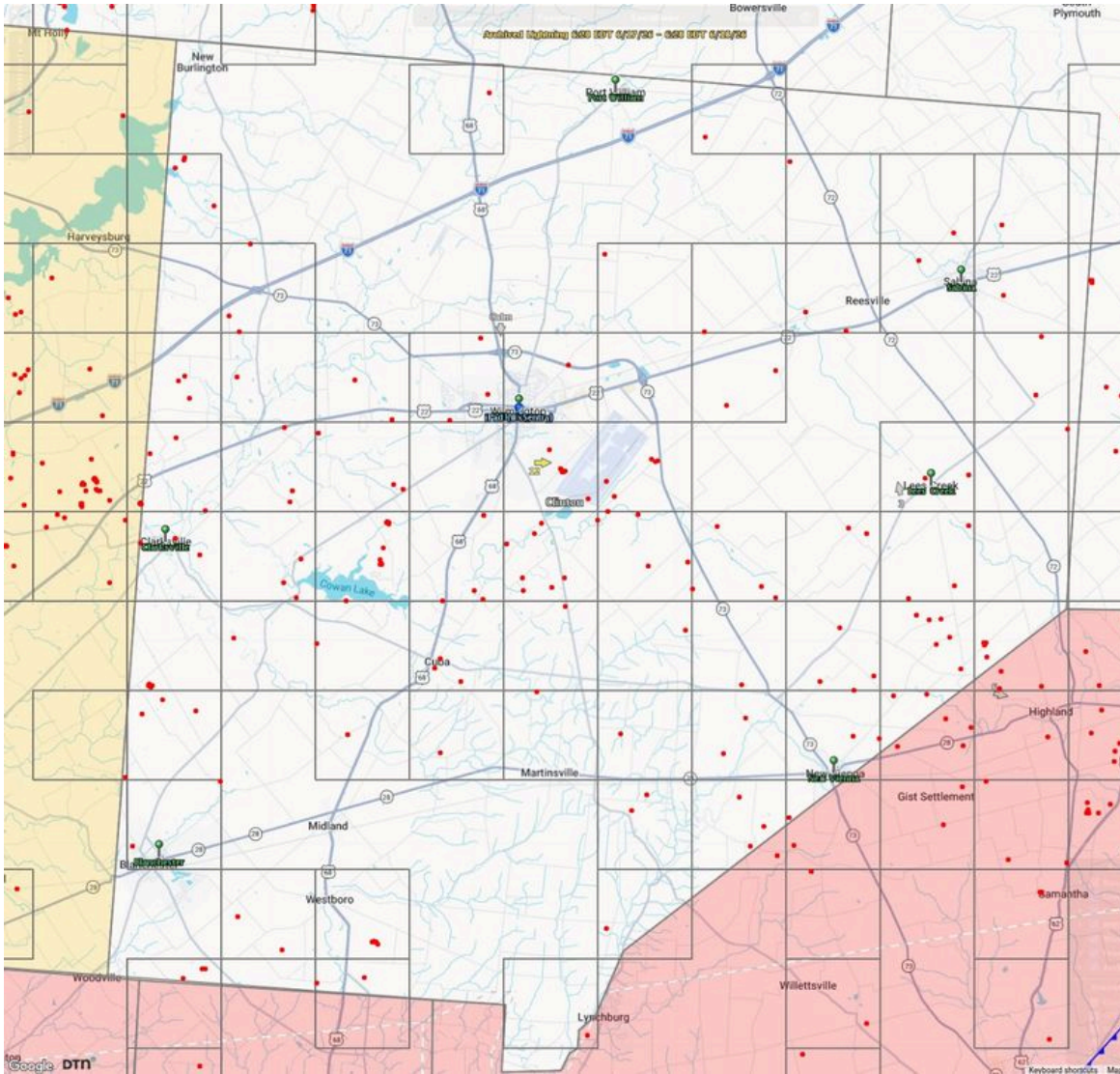
Thomas Breckel

05:15 Tornado Watch 347 allowed to expire by NWS ILN.

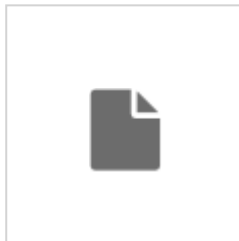
Thomas Breckel

05:18	<p>Following overnight severe weather impacts, Clinton County EMA utilized the Clinton County Emergency Alerts (CCEA) system to distribute a public safety message advising residents to use caution during the morning commute. The alert informed recipients that high water and storm debris may be present on area roadways and encouraged motorists to reduce speed and remain alert for hazards. The notification was issued to increase public awareness of residual impacts from overnight storms, reduce the potential for secondary incidents, and support safe travel conditions across the county while damage assessments and roadway condition reports continued to be received.</p>	Thomas Breckel
05:31	<p>PowerOutage.us monitoring identified a localized electrical outage affecting four (4) AES Ohio customers in the vicinity of Clark Road and Steele Road near State Route 73, north of the Snow Hill area. The outage was first reported at approximately 0240 hours on June 18, 2026, with AES Ohio estimating service restoration by approximately 0600 hours. This represents the only known power outage within Clinton County associated with the overnight severe weather event. No other utility outages were reported by AES Ohio, Duke Energy, or South Central Power at the time of assessment. Clinton County EMA will continue monitoring utility status and any additional infrastructure impacts as information becomes available.</p>	Thomas Breckel
06:30	<p>Lightning stroke data for 17–18 June 2026 was analyzed using the provided Clinton County, municipal, and township GIS boundary layers to support post-storm situational awareness, fire investigation considerations, and infrastructure impact assessment. A total of 168 cloud-to-ground lightning strikes were identified within Clinton County during an approximately 7 hour and 50 minute period. The strongest recorded strike measured -73 kA and occurred in Union Township at 2:06 AM EDT. Lightning activity was concentrated primarily across Vernon Township (26 strikes), Green Township (24 strikes), and Union Township (17 strikes), with Wilmington recording the highest number of strikes among incorporated municipalities with 16. Temporal analysis indicated the most intense period of lightning activity occurred between approximately 2:12 AM and 2:27 AM as a well-organized line of thunderstorms moved across the county. Areas identified for heightened post-storm awareness include Union Township due to multiple high-energy strikes and Vernon and Green Townships due to elevated strike density. Findings were documented to support emergency management</p>	Thomas Breckel

situational awareness, utility coordination, fire investigation considerations, and public information activities following the overnight severe weather event.



Lightning Strikes 2026-06-18 062916.jpg



strokes_2026-06-17 Lightning Data.csv

07:32 Following completion of overnight severe weather monitoring and coordination activities associated with thunderstorms impacting Clinton County on June 17–18, 2026, the incident monitoring channel was formally closed and archived at 12:00 PM EDT on June 18, 2026. The channel had been utilized to document weather intelligence, forecast updates, National Weather Service briefings, stakeholder notifications, public information activities, utility status monitoring, and situational awareness reports throughout the event. At the time of closure, no significant unresolved impacts were known within Clinton County. Reported impacts remained limited to localized power outages, lightning activity, and isolated high water locations. All immediate response and monitoring objectives had been completed, and any remaining follow-up activities will be handled through normal agency operations and routine situational awareness processes.

Thomas Breckel

07:49 Screenshots of all weather-related social media posts published to the Clinton County EMA Facebook page between June 13, 2026, and the morning of June 18, 2026, were collected and archived as part of the

Thomas Breckel

incident documentation process. The archived records include preparedness messaging, forecast updates, weather briefings, severe weather outlooks, situational awareness updates, warning-related information, public safety messaging, high water notifications, and post-storm information distributed before, during, and after the event. These records were preserved to document public information activities, demonstrate public outreach efforts conducted throughout the monitoring period, and support future after-action review, incident documentation, and records retention requirements.



Clinton Co. Emergency Management Agency

Published by Thomas Breckel · 9h · 🌐

...

Updated 9:41 pm on 17 June - Clinton County EMA continues to monitor severe weather developments across the region through coordination with the National Weather Service Wilmington Forecast Office and the Storm Prediction Center.

An updated NWSChat briefing and SPC Mesoscale Discussion 1173 indicate an environment favorable for severe thunderstorms moving east across southwest Ohio during the late evening and overnight hours. Severe storms are expected to approach western portions of the region around 10:00 PM and continue eastward through the overnight period.

Primary hazards remain damaging straight-line winds and isolated tornadoes, although forecasters continue to note that a stronger tornado cannot be completely ruled out, particularly in areas that have experienced less rainfall earlier today. Strong wind shear remains in place across the region and may allow severe winds aloft to be transferred to the surface despite decreasing instability after sunset.

Mesoscale Discussion 1173 further highlights the potential for organized severe weather as storms move east through the Ohio Valley, reinforcing concerns for damaging winds, isolated tornadoes, and impacts to power infrastructure, transportation networks, communications systems, and other community lifelines.

Clinton County EMA is actively monitoring forecast updates, radar trends, watches, warnings, and operational impacts. Residents are encouraged to remain weather aware overnight, ensure multiple methods are available to receive warnings, and be prepared to take protective action should warnings be issued for their area. [See less](#)

Short Term Update

June 18

Storms in central Indiana continue to move east

greatest concern for severe weather in the next several hours within the circled area. Storms move into the circled area between 10 PM and 12 AM. Storms will continue eastward overnight.

Primary hazards continue to be:
Damaging winds
Isolated tornadoes
Flooding/ flash flooding
Large hail

Ensure multiple ways to receive warning information during the overnight hours!



NATIONAL OCEANIC AND ATMOSPHERIC ADMINISTRATION
NATIONAL WEATHER SERVICE - WILMINGTON, OHIO

weather.gov/in @NWSILN /NWSWilmingtonOH

National Weather
Wilmington

Current Watches, Warnings, and Advisories





FB - 2141 Update - 2026-06-18 071647.jpg



Clinton Co. Emergency Management Agency

Published by Thomas Breckel · 13h · ⚙️



NOTICE



DUE TO THE POTENTIAL FOR
SEVERE WEATHER,
THE BLANCHESTER
MUNICIPAL BUILDING
WILL BE OPEN
AS NEEDED.



IF YOU REQUIRE ACCESS TO
THE BLANCHESTER MUNICIPAL BUILDING
DURING INCLEMENT WEATHER,
PLEASE CONTACT



CLINTON COUNTY DISPATCH
AT
937-382-1611

THANK YOU FOR YOUR COOPERATION AND STAY SAFE.



Village of Blanchester

16h · ⚙️



Clinton Co. Emergency Management Agency

Published by Thomas Breckel · 14h · ⚙️



Blanchester Police Department

14h · 🌐

The municipal building will open for those needing shelter from the storms this evening- enter on the mayor's office side. We typically unlock the doors once we start receiving warnings and watches, however, if you need shelter prior to that, please call dispatch at 937-382-1611, so they can let officers know you're coming, and so we can make sure the doors are unlocked.

Now is the time to prepare for these storms! Please make sure you have several ways to receive weather notifications!

📞 If you need to sign up for free severe weather alerts:

https://entry.inspironlogistics.com/clinton_oh/wens.cfm

Stay safe and weather aware! See less



Clinton Co. Emergency Management Agency

Published by Thomas Breckel · 2h ·

...

Early morning Tornado Warning questions - We have received a few questions regarding notifications associated with the Tornado Warning issued by the National Weather Service at 2:01 AM on Thursday, June 18, 2026.

The warning issued by the National Weather Service was a polygon-based warning, meaning it only applied to the specific geographic area outlined by meteorologists based on the storm's projected path. In this case, the warning polygon extended into only a very small portion of western Clinton County near the Warren County line.

At 2:17 AM, the National Weather Service cancelled the Tornado Warning after the storm weakened and no longer met tornado warning criteria. The warning was therefore in effect for approximately 16 minutes before being replaced by a Special Weather Statement for strong thunderstorms capable of producing gusty winds and heavy rainfall.

Because the warning polygon only crossed into the extreme western edge of Clinton County, it did not encompass most of the county. As a result, many residents were not included within the warning area and would not have received location-based alerts through systems that rely on the National Weather Service warning polygon.

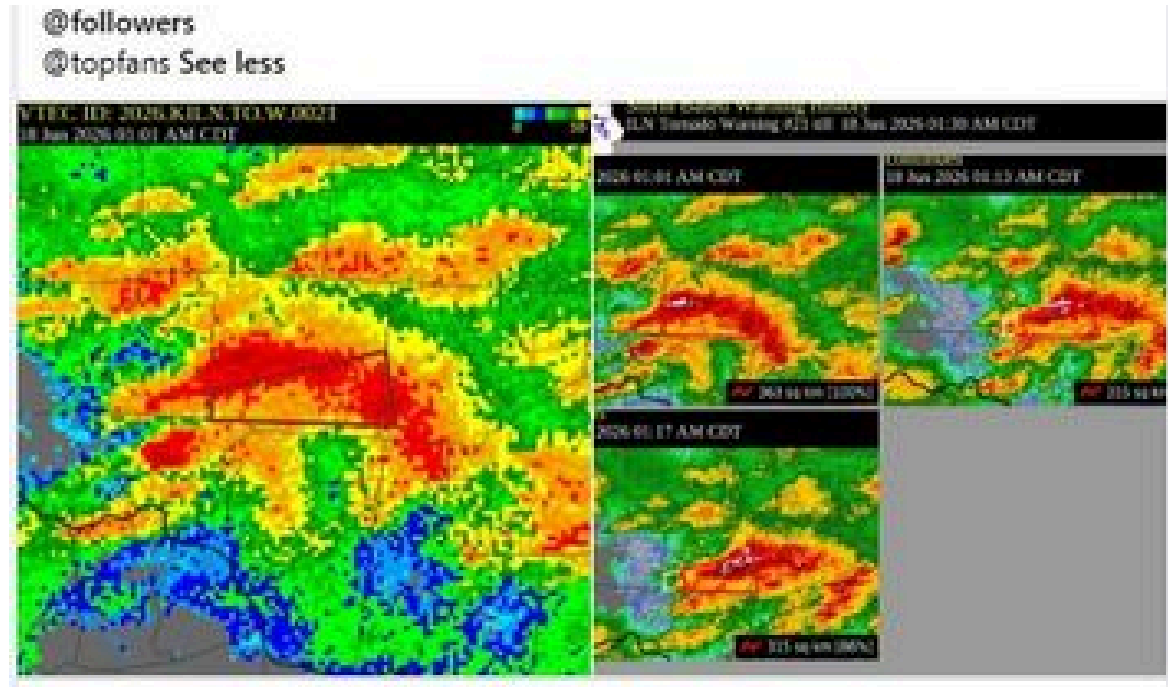
NOAA Weather Radios are programmed to activate based on county and warning coding. Because the warning polygon crossed into Clinton County, NOAA Weather Radios programmed for Clinton County would have activated even though only a small portion of the county was included in the warning.

Residents enrolled in Clinton County Emergency Management Agency weather alerts through the Clinton County Emergency Alerts (CCEA) system receive notifications based on the location address entered into the system. If the registered address did not fall within the National Weather Service warning polygon, an automatic warning notification would not have been sent.

Although the warning polygon did not include most of Clinton County, Clinton County EMA manually distributed an informational text alert advising that a radar-indicated circulation near Maineville in Warren County was moving east toward the Clinton County border. This message was intended to provide additional situational awareness as the storm approached the area.

Outdoor warning sirens are intended primarily for people who are outdoors and are activated according to local activation criteria. Given the limited extent of the warning polygon within Clinton County, the warning area likely did not extend far enough into the county to meet the activation threshold for outdoor warning sirens affecting the Village of Blanchester.

This event serves as a reminder that no single warning method should be relied upon as the sole source of emergency notification. Residents are encouraged to maintain multiple methods of receiving warnings, including NOAA Weather Radio, Wireless Emergency Alerts (WEA) on mobile phones, local media, trusted weather applications, and CCEA weather alerts.



FB - Early Morning Tornado Warning Questions - 2026-06-18 071105.jpg



Clinton Co. Emergency Management Agency

Published by Thomas Breckel · June 16 at 11:59 AM · ⚙️



EMA Emergency Notice Page Activated – Monitoring Status

Clinton County EMA has activated the Emergency Notice Page at <https://www.cc-ema.org/notice> and is currently operating at a YELLOW status (Monitoring / Advisory).

While there remains a potential for severe weather across the region from Wednesday into Thursday, this activation is intended as much for familiarization and training as it is for weather monitoring. We encourage residents, elected officials, partner agencies, and community stakeholders to take a few minutes to explore the information available and become familiar with how EMA shares information during incidents and significant events.

The Emergency Notice Page serves as a public-facing information hub and may include:

- Situation summaries and updates
- Public protective action guidance
- Operational status information
- Resource links
- Situational awareness products

The page also includes a link to our public incident information portal:

<https://operations-center.us.d4h.com/r/LxLdm0qa97>

This portal provides a view of information being shared through the incident management process, including situation reports, public information updates, timelines, and other resources made available for public viewing.

What it IS:

- ✓ A source for official incident-related information and updates from Clinton County EMA.
- ✓ A way to view selected situational awareness information during incidents, exercises, and periods of enhanced monitoring.

What it is NOT:

- ✗ A replacement for 911 during emergencies.
- ✗ A live dispatch feed.
- ✗ A source for confidential or sensitive response information.
- ✗ A substitute for weather warnings issued by the National Weather Service.

We will continue monitoring forecast conditions and provide updates as appropriate. As always, residents should maintain multiple methods of receiving weather alerts and warnings. [See less](#)

OPERATIONS-CENTER.US.D4H.COM
operations-center.us.d4h.com





Clinton Co. Emergency Management Agency

Published by Thomas Breckel · June 15 at 7:07 AM ·



⚠️ WEATHER HEADS UP: WEDNESDAY & THURSDAY ⚠️

Clinton County EMA is monitoring the potential for impactful weather Wednesday and Thursday this week.

Current forecast guidance indicates the possibility of:

- ☁️ Severe thunderstorms
- 🌪️ Damaging winds
- 🌨️ Large hail
- ⚡ Frequent lightning
- 🌧️ Heavy rainfall
- 🌊 Localized flooding

The greatest concern currently appears to be from Wednesday afternoon through Thursday morning, although forecast details will continue to evolve over the next few days.

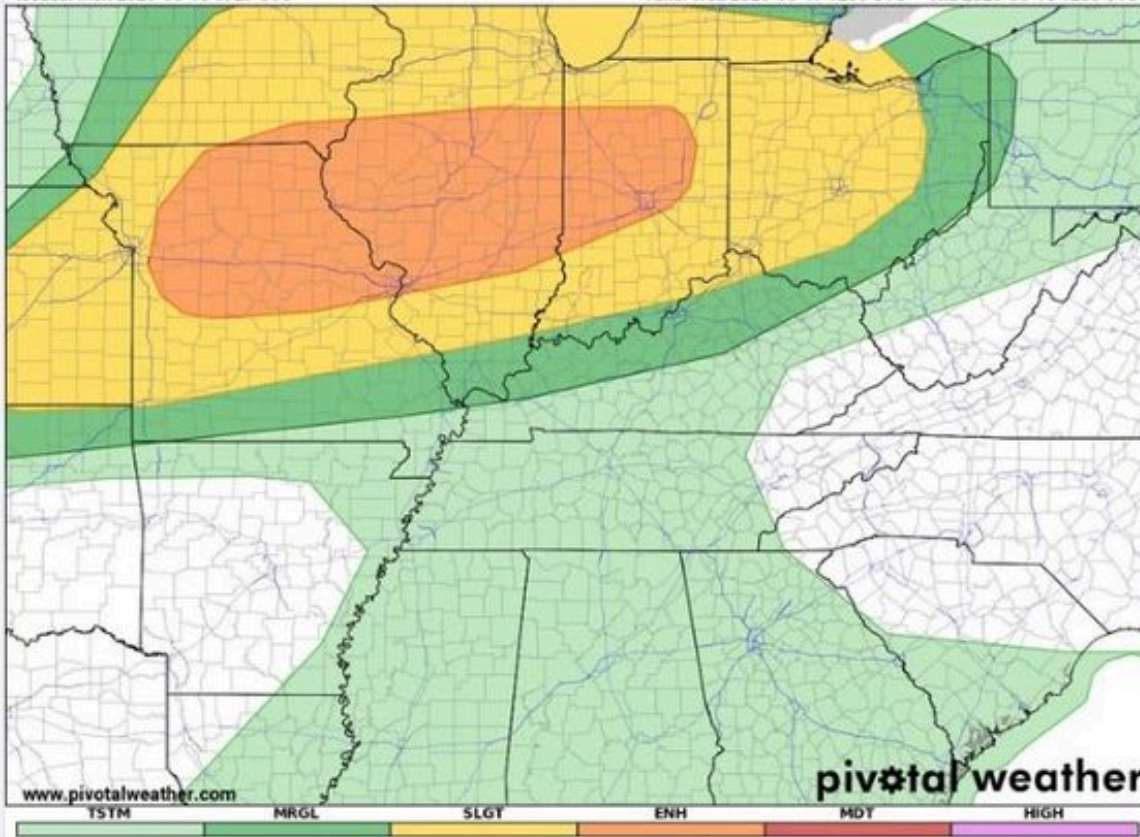
Now is a good time to review outdoor event plans, ensure you have multiple ways to receive weather warnings, and be prepared to adjust activities if conditions deteriorate.

We will continue to monitor the forecast and provide updates as confidence increases. Tornado potential remains uncertain at this time but cannot be dismissed. [See less](#)

Storm Prediction Center - Day 3 Categorical Outlook

Issued: Mon 2026-06-15 0727 UTC

Valid: Wed 2026-06-17 1200 UTC - Thu 2026-06-18 1200 UTC



FB - Heads Up Message - 2026-06-18 072939.jpg



Clinton Co. Emergency Management Agency

Published by Thomas Breckel · 6h · ⚙️



☁️ Late Evening Weather Update – 11:30 PM ☁️

Some encouraging news tonight.

Over the last 30 minutes, several of the storms we have been closely monitoring in Indiana have shown signs of weakening and losing some of their organization and intensity. Additionally, there are currently no active Tornado Warnings anywhere in the United States, a significant change from earlier this evening.

While this is certainly a positive trend, the threat is not over yet.

⚠️ Clinton County remains under a Tornado Watch until 5:00 AM Thursday, June 18. Additional thunderstorms remain possible overnight, and conditions are still capable of supporting severe weather should storms strengthen again.

Before heading to bed:

- ✅ Make sure your Weather Radio is turned on and has fresh batteries.
- ✅ Verify Wireless Emergency Alerts are enabled on your phone.
- ✅ Know where you would go if a warning is issued overnight.
- ✅ Keep a way to receive weather alerts that will wake you while sleeping.

We will continue monitoring conditions and provide updates as needed. Hopefully the current weakening trend continues, but overnight severe weather requires continued attention.

Stay safe, Clinton County. [See less](#)

[FB - Late Evening Weather Update - 2026-06-18 071243.jpg](#)



Clinton Co. Emergency Management Agency

Published by Thomas Breckel · Just now ·

⚡ Lightning was busy across Clinton County overnight! ⚡

A total of 168 cloud-to-ground lightning strikes were recorded within the county during the storms. Vernon Township experienced the highest number of strikes with 26, followed closely by Green Township with 24 and Union Township with 17. Among incorporated communities, Wilmington recorded the most lightning activity with 16 strikes, while Blanchester and Clarksville each recorded one strike.

The highest concentration of cloud-to-ground lightning occurred in the unincorporated portions of Vernon Township and Green Township, making those areas the county's primary lightning hotspots during the event.

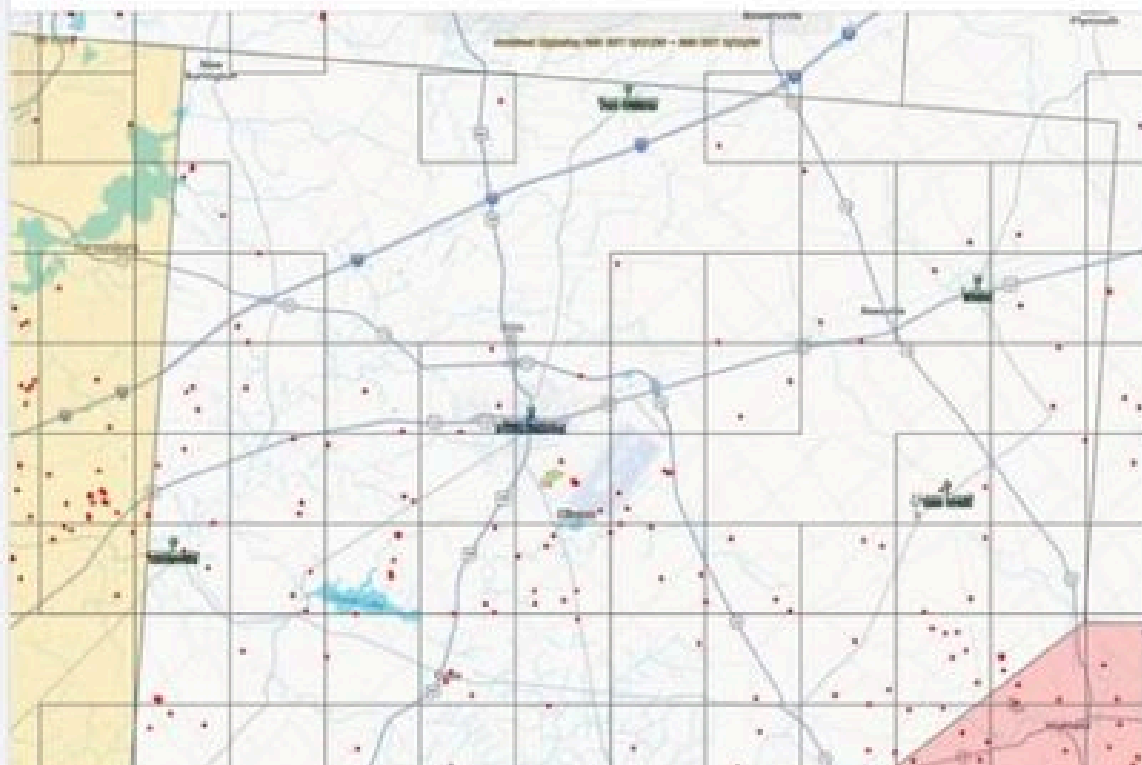
The strongest lightning strike measured an impressive 73,000 amps and occurred in Union Township shortly after 2:06 AM. Union Township also experienced another of the county's top three strongest strikes, highlighting the intensity of the storm as it moved through that area.

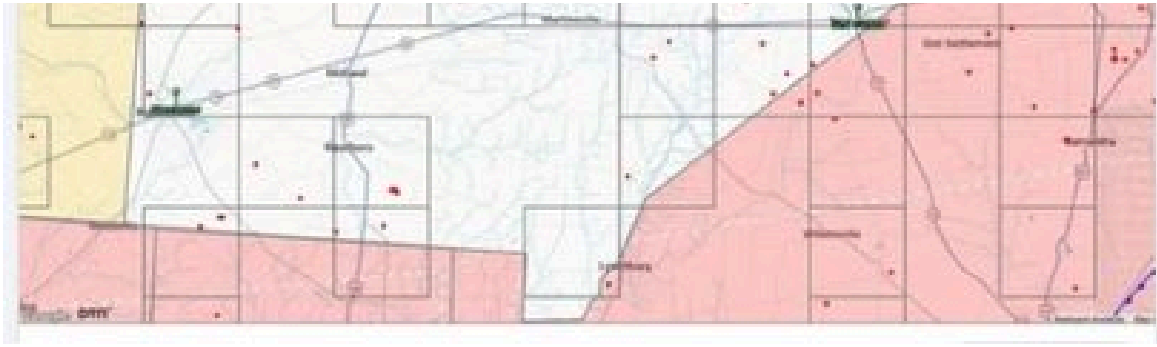
Most of the lightning activity occurred during a concentrated burst between 2:00 AM and 2:30 AM as a strong line of thunderstorms moved through the area, with the busiest 15-minute period occurring between approximately 2:12 AM and 2:27 AM.

Remember: lightning can strike several miles away from heavy rain and may occur even when skies overhead are not yet dark.

When thunder roars, go indoors.

Plan. Prepare. Protect. [See less](#)





FB - Lightning Analysis - 2026-06-18 070827.jpg



Clinton Co. Emergency Management Agency

Published by Thomas Breckel · 8h · 🌐

...

📍 What is a Mesoscale Discussion (MD)? 📍

You may have seen Clinton County EMA reference SPC Mesoscale Discussion 1173 this evening and wondered what it means.

A Mesoscale Discussion (MD) is a technical weather briefing issued by the National Weather Service's Storm Prediction Center (SPC) when forecasters are closely monitoring an area for developing severe weather. Think of it as a "heads-up for meteorologists, emergency managers, and weather partners" that conditions are becoming favorable for severe storms. Mesoscale Discussions often precede the issuance of a Tornado Watch or Severe Thunderstorm Watch by 1–2 hours.

📌 What an MD is NOT:

- It is not a Watch.
- It is not a Warning.
- It does not mean severe weather is guaranteed.

Instead, it means forecasters are seeing ingredients come together that could support severe weather in the coming hours.

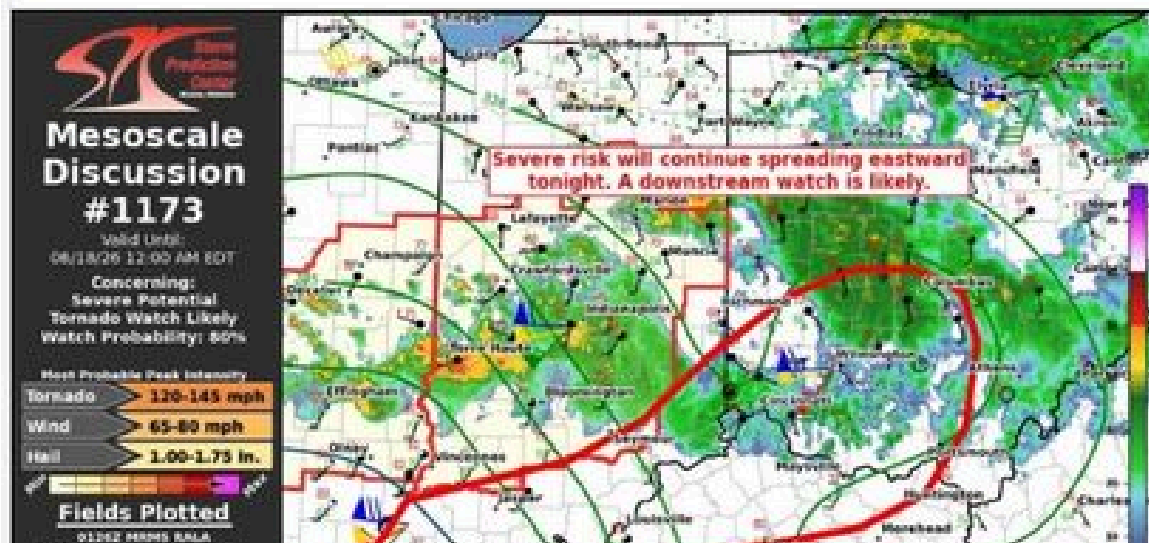
📍 Using MD 1173 as an example:

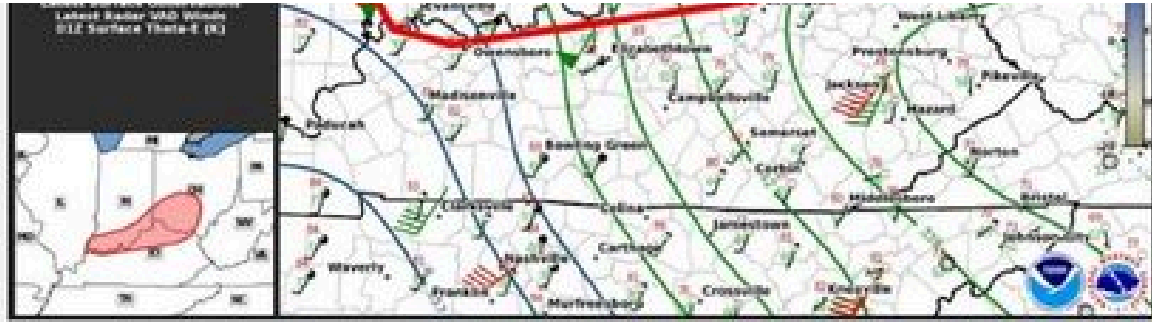
This evening's discussion highlighted a corridor that includes southwest Ohio where strong wind shear and favorable atmospheric conditions could support severe thunderstorms capable of producing damaging winds and tornadoes as storms move eastward through the Ohio Valley. The discussion reinforced concerns already being monitored by the National Weather Service and local emergency management agencies.

🌱 A simple way to think about it:

- 1 Forecast Outlook = "Severe weather may occur today."
- 2 Mesoscale Discussion = "The atmosphere is becoming favorable. We're taking a closer look."
- 3 Watch = "Be prepared. Severe weather is possible."
- 4 Warning = "Take action now. Severe weather is occurring or imminent."

Mesoscale Discussions are one of the tools emergency managers use to stay ahead of potentially dangerous weather and provide early situational awareness before watches and warnings are issued. [See less](#)





FB - Mesoscale Discussion 1173 - 2026-06-18 071351.jpg



Clinton Co. Emergency Management Agency

Published by Thomas Breckel · 1h · ⚙️



⚠️ Morning Travel Advisory – High Water Locations ⚠️ for Thursday, 18 June 2026.

Motorists traveling in Clinton County this morning should use caution and be alert for areas of high water following overnight rainfall.

Locations reported to Clinton County EMA include:

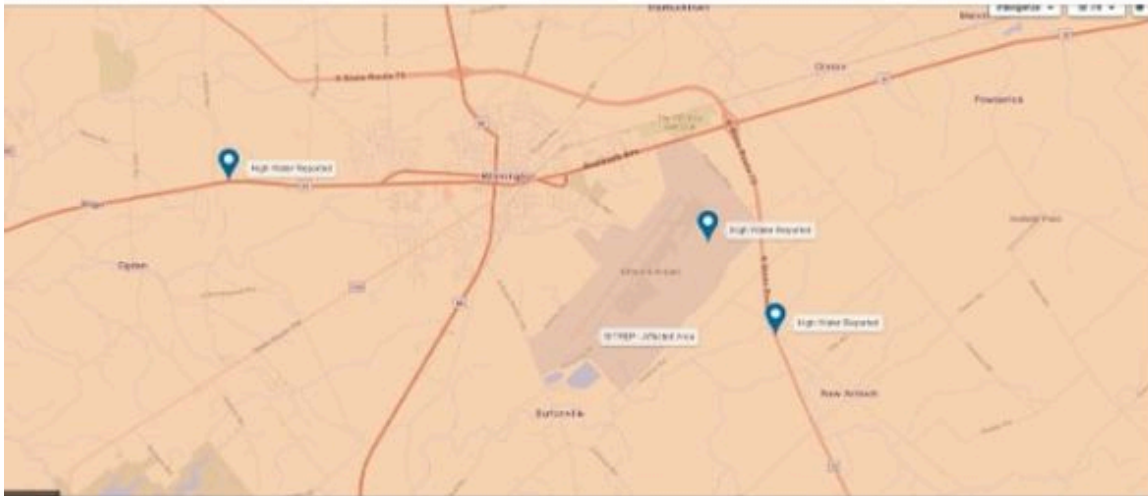
- US 22 near Ellis Run Road (by Bible Baptist Church)
- State Route 73 near Antioch Road
- Airborne Road near the Amazon facility

Please note these are only locations that were reported to us through dispatch. Additional areas of high water may exist throughout the county that have not yet been reported.

ODOT is working to place warning signage at affected locations. Conditions can change quickly, and water-covered roadways may be deeper than they appear.

Please slow down, allow extra travel time, and consider alternate routes if necessary. Never drive through standing or moving water if you cannot determine its depth.

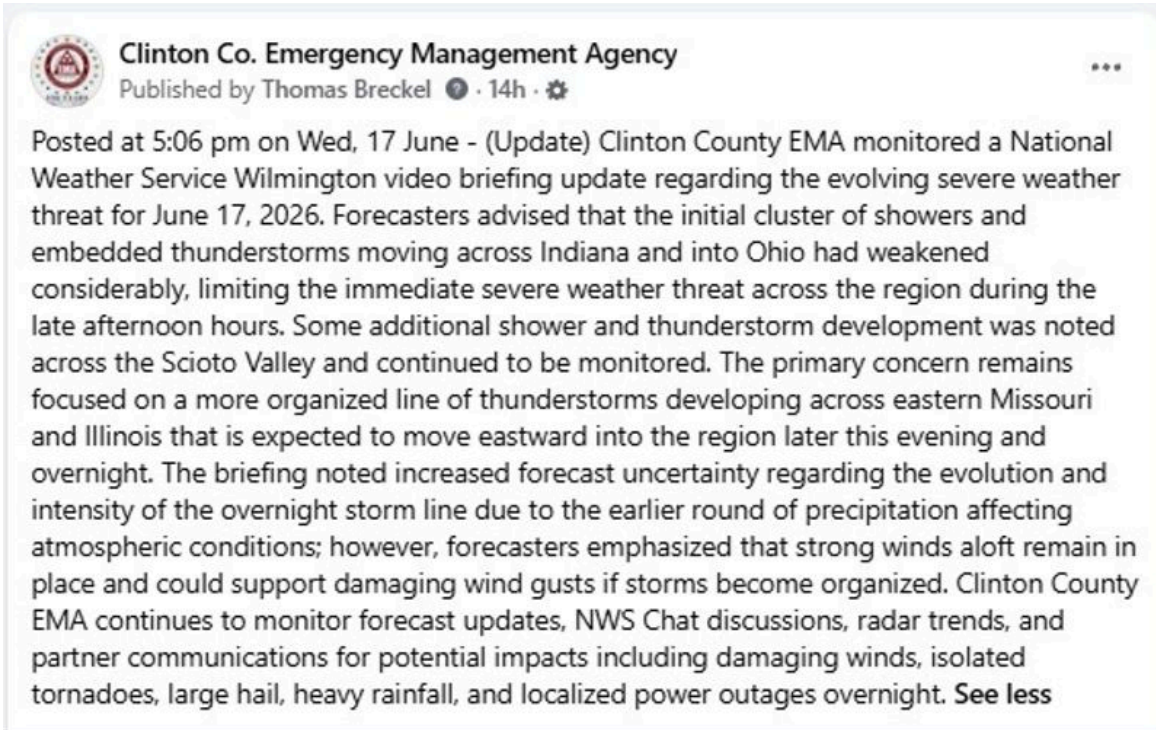
Clinton County EMA will continue to monitor conditions and provide updates as needed. [See less](#)



FB - Morning Travel Advisory - 2026-06-18 070924.jpg



FB - NWS Telecon - 2026-06-18 072558.jpg



FB - NWS Video Update - 2026-06-18 072431.jpg

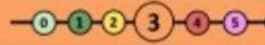


Clinton Co. Emergency Management Agency

Published by Thomas Breckel · 11h · ⚙️



Tonight's Severe Weather Outlook



NATIONAL WEATHER SERVICE - WILMINGTON, OH

LEVEL 3

TIMING



- 8 PM tonight through 5 AM Thursday.

THREATS

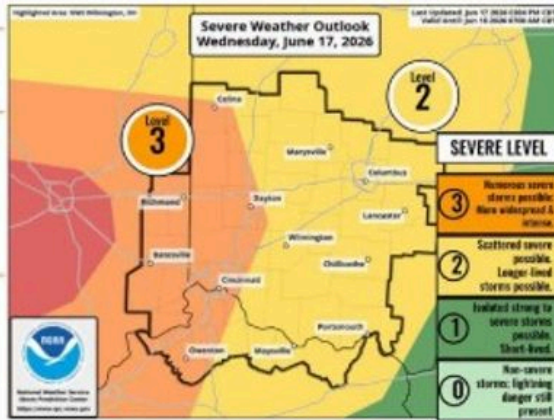


- Damaging wind gusts
- Isolated tornadoes
- Large hail
- Heavy rain - localized flash flooding

FORECAST CHALLENGES



- There is uncertainty in how this evening's rain will influence overnight severe weather, as it may "overturn" the environment/allow for a less severe event. However, there is a lot of wind energy available, so it won't take much for severe strength winds to occur.



Graphic updated: 5:30 PM,

6/17/2026



National Oceanic and Atmospheric Administration
U.S. Department of Commerce



weather.gov/iln

@NWSILN



/NWSWilmingtonOH

National Weather Service
Wilmington, OH



US National Weather Service Wilmington OH

★ Favorites · 12h · 🌐

[6:40 PM] A subtle shift southeast in the Enhanced (Level 3) Severe Threat for overnight tonight and some updated messaging regarding forecast challenges. ... See more

FB - Tonights Severe Weather Outlook - 2026-06-18 071717.jpg



Clinton Co. Emergency Management Agency

Published by Thomas Breckel · 4h ·



At 2:01 AM EDT on Thursday, June 18, 2026, the National Weather Service Wilmington issued a Tornado Warning for southern Warren County and west-central Clinton County, including the Blanchester area, until 2:30 AM EDT. The warning was based on radar-indicated rotation from a severe thunderstorm capable of producing a tornado near Kings Island, moving east at 40 mph. Locations listed included Blanchester, Clarksville, State Route 350 at US 22, and nearby areas. Clinton County EMA continued monitoring radar and NWS Chat for storm progression and potential impacts.

Additional information updated at 3:50 am on Thursday, 18 June 2026 in a separate post: <https://www.facebook.com/share/p/18Xdu8KPYk/> . See less



FB - TorWarn Info - 2026-06-18 071159.jpg



Clinton Co. Emergency Management Agency

Published by Thomas Breckel · 16h · 🌐



Help spread the word by sharing... 🌐 **UPDATED WEATHER BRIEFING FOR CLINTON COUNTY**

The National Weather Service has updated its severe weather briefing for today and tonight. The overall threat remains focused on this evening and overnight, but forecasters have now added the possibility of an earlier round of showers and isolated thunderstorms between 3 PM and 6 PM. While not expected to be the main event, a few storms during this period could become strong or severe.

The primary severe weather threat for Clinton County is still expected later tonight, with the latest timing graphics indicating the greatest risk beginning around 11 PM and continuing overnight. Damaging winds remain the primary concern, with isolated tornadoes, large hail, frequent lightning, and localized flooding also possible.

Now is a good time to review your severe weather plan, ensure you have multiple ways to receive warnings overnight, and secure loose outdoor items before storms arrive.

📄 Latest NWS Briefing: <https://www.weather.gov/media/iln/DssPacket.pdf>

@topfans
@followers See less

Support Briefing

Wilmington, OH Service Area

Have Multiple Ways to Receive NWS Warnings

WEA (Weather Emergency Alert) and NOAA Weather Radio

Family, Friends or Neighbors

weather.gov/in @NWSILN @NWSWilmingtonOH

Arrival Time of Widespread Line of Storms

June 1 1:22 PM

Timing depicted is for the line of widespread storms this evening tonight (greatest severe weather threat)

First round of showers with isolated storms are also expected between 3-6 PM. There's a chance some storms in this first round could become strong/severe.

National Weather Service Wilmington

Storm Outlook

damaging winds and tornadoes is most central and southwest Ohio, with large hail in west central Ohio and IA.

Threat: 8PM-5AM

THREATS

wind gusts
hail
tornadoes

CHALLENGES

uncertainty in how quickly storms will arrive, which could affect the timing of the event.

Location and Threat Specific Timing

June 1 1:22 PM

Highest threat after 8 PM for these locations, but a small chance for isolated severe storms before.

17 June 2020 Severe Weather Outlook
Richmond, Indiana

17 June 2020 Severe Weather Outlook
Cayton, Ohio

National Weather Service Wilmington

Location and Threat Specific Timing

June 1 1:22 PM

Highest threat after 11PM for these locations, but a small chance for isolated severe storms before.

17 June 2020 Severe Weather Outlook
Wilmington, Ohio

17 June 2020 Severe Weather Outlook
Columbus, Ohio

National Weather Service Wilmington

+5

 **Clinton Co. Emergency Management Agency**
 Published by Thomas Breckel · 9h · 

 **WATCH vs. WARNING — What's the Difference?** 

When severe weather threatens Clinton County, you'll often hear the terms Watch and Warning. They are not the same thing.

-  **WATCH = Be Prepared**
 Conditions are favorable for severe weather to develop. Think of a watch as a heads-up that you should review your plans, monitor weather updates, and be ready to act if conditions worsen.
-  **WARNING = Take Action**
 Severe weather is occurring or expected very soon. A warning means the threat is happening now or is imminent. Move to a safe location immediately and follow protective actions appropriate for the hazard.

A simple way to remember it:

-  Watch = Watch the weather
-  Warning = Take action now

Whether it's severe thunderstorms, tornadoes, flash flooding, or winter weather, having multiple ways to receive warnings can provide valuable minutes when every second counts.

Watch this short video to learn more: <https://youtu.be/x3V3HZBs1Y4> . See less



YOUTUBE.COM
FAQ: What's a Watch?



Clinton Co. Emergency Management Agency

Published by Thomas Breckel · June 16 at 7:12 AM · 🌩️



WEATHER OUTLOOK UPDATE No. 1

Clinton County EMA continues to monitor an active weather pattern expected to affect the area through Thursday.

- ◆ Tuesday: Isolated strong storms possible, mainly late afternoon and evening.
- ◆ Wednesday: Currently the day of greatest concern, with the potential for severe thunderstorms, damaging winds, large hail, heavy rainfall, and a few tornadoes (less than 2% risk, but not zero).
- ◆ Thursday: Additional storms remain possible, along with localized flooding and gusty winds even outside of thunderstorms.

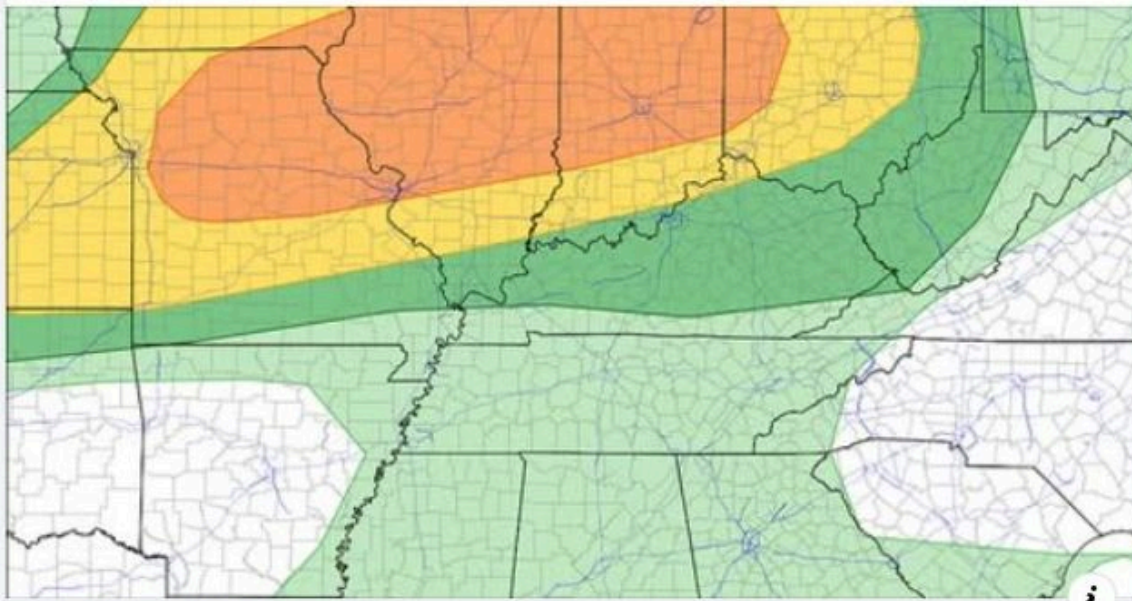
Forecast confidence is increasing that Wednesday evening into Thursday will be the primary period to watch, but exact timing and storm intensity will continue to be refined.

Residents with outdoor plans, events, travel, or work activities should stay weather aware and monitor future updates.

Read the full Weather Outlook Update #1 here: <https://www.cc-ema.org/post/hum-20260616-18> .

Plan. Prepare. Protect.

@followers See less



CC-EMA.ORG

HUM 20260616-18

FB - Weather Outlook Update No. 1 - 2026-06-18 072901.jpg



Clinton Co. Emergency Management Agency

Published by Thomas Breckel · Yesterday at 6:48AM · ⚙️



🌤️ WEATHER OUTLOOK UPDATE #3 POSTED 🌤️

Forecast confidence continues to increase that severe weather will affect portions of southwest Ohio tonight. Damaging winds remain the primary threat, but isolated tornadoes, large hail, torrential rainfall, and localized flash flooding are also possible.

🕒 The expected arrival of the primary line of storms has shifted slightly earlier than previously forecast.

📄 NEW IN UPDATE #3:

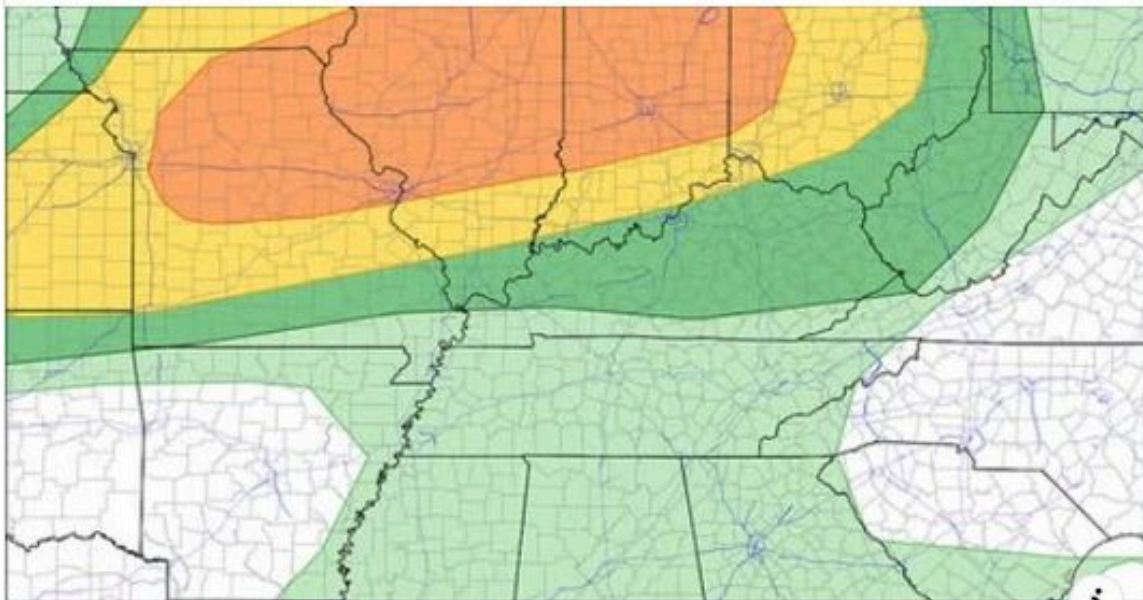
We've added a Community Impact Assessment that looks beyond the weather forecast and highlights potential impacts to critical community lifelines such as power, communications, transportation, healthcare, public safety, and daily activities. We've also included Cascading Impact Considerations to show how one weather impact can create additional challenges across the community.

Examples include:

- ⚡ Damaging winds leading to power outages and communication disruptions
- 🌧️ Heavy rainfall affecting travel and emergency response
- 🔌 Power outages reducing access to weather information overnight

Residents are encouraged to review the update, charge mobile devices, ensure weather alerts are enabled, and have multiple ways to receive warnings tonight.

Read Update #3: <https://www.cc-ema.org/post/hum-20260616-18> .
@followers See less



CC-EMA.ORG

HUM 20260616-18



FB - Weather Outlook Update No. 3 - 2026-06-18 072626.jpg

Clinton Co. Emergency Management Agency
 Published by Thomas Breckel · 9h · 🌩️

What does a CIG1 tornado signal mean?

A CIG1 (Conditional Tornado Risk Level 1) indication means weather forecasters have identified an environment that could support tornado development if storms form and evolve in the right way. It is a lower-end tornado concern, but one that still deserves attention because tornadoes can occur with little warning.

For Clinton County, a CIG1 signal generally suggests the possibility of brief, localized tornadoes, most commonly in the EF0 to EF1 range (winds roughly 65–110 mph), although stronger tornadoes can never be completely ruled out. The signal does not mean a tornado is expected everywhere in the county. Instead, it indicates that within the broader forecast area there is approximately a 5% chance of a tornado occurring within 25 miles of any given point during the forecast period.

In practical terms, a CIG1 day is a "stay weather aware" situation. Most locations will not experience a tornado, but the atmospheric ingredients are sufficient that residents should monitor forecasts, have multiple ways to receive warnings, and know where they would take shelter if a Tornado Warning is issued. [See less](#)

Storm Prediction Center - Day 1 Tornado Outlook
 Issued: Thu 2026-06-18 0110 UTC Valid: Thu 2026-06-18 0100 UTC – Thu 2026-06-18 1200 UTC

www.pivotalweather.com pivotal weather

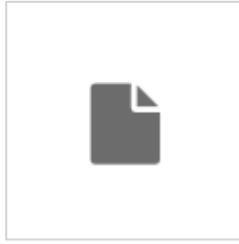
2% 5% 10% 15% 30% 45% 60% CIG1 CIG2 CIG3

FB - What does a CIG1 Tornado Signal Mean - 2026-06-18 071500.jpg

08:29 A radar sweep review covering the period from the evening of June 17, 2026, through the early morning hours of June 18, 2026, was conducted to document storm evolution and impacts across Clinton County and the surrounding region. Radar imagery indicated multiple rounds of thunderstorms moving through southwest Ohio, with the most significant activity occurring overnight as a line of strong to severe thunderstorms tracked eastward across the county. Storms produced frequent lightning, periods of heavy rainfall, and strong wind signatures, with localized areas of rotation prompting National Weather Service warning operations in portions of the region. Radar analysis confirmed the progression of the primary convective line through

Thomas Breckel

Clinton County during the early morning hours, followed by gradual weakening and eastward departure of precipitation. Information gathered from the radar review was utilized to support situational awareness, validate reported impacts, assist with post-incident documentation, and inform the final assessment of the weather event.



[20200618 radar sweep.mp4](#)